

EDEN

LUXURY TRAVEL

AFRICA



AFRICA

WHY BOOK WITH EDEN?

1.

You'll never pay more with EDEN than if you'd booked the trip yourself.

2.

Your very own dedicated Personal Travel Director, taking care of all your travel needs.

3.

Totally tailor-made itineraries. We're committed to granting all your wishes and wants and will put in as much work as it takes to make your arrangements absolutely right for you and your loved ones.

4.

Remote islands... private jets... authentic, individually bespoke experiences... VIP access... whatever it is you're looking for, EDEN has the whole world covered.

5.

We're here 24/7, 365 days a year, for absolutely anything you may need: from extending your trip, to arranging all sorts of additional extras. Just sit back, relax and let us take care of everything.

CONTENTS...

6	<i>SOUTHERN AFRICA</i>
88	<i>EAST AFRICA</i>

<i>Southern Africa</i>		<i>East Africa</i>	
South Africa	4-61	Kenya	88-103
Botswana	62-73	Tanzania	104-119
Namibia	74-79	Zanzibar	120-125
Mozambique	80-87	Rwanda	126-133
		Olsen Animal Trust	134-135

**OUR VISION IS TO CREATE
AN UNRIVALLED GLOBAL
COLLECTION OF LUXURY
HOLIDAYS FOR THOSE WHO
CRAVE EXCELLENT SERVICE,
THE UTMOST PRIVACY AND
WHO LIVE FOR ADVENTURE,
CULTURE, DESIGN & FASHION.**





SOUTH AFRICA

‘A world in one country’ – as if cosmopolitan cities, a warm sunny climate and 2000 miles of beautiful beaches weren’t enough, 90% of visitors come for the wildlife and unspoilt landscape. South Africa really does have it all.

This is a big country – twice the size of France, in fact – and its diversity is just staggering. There’s a little bit of everything here: arid deserts, lush forests, manicured vineyards, dramatic mountains... not to mention rich game-viewing, from charging elephants to waddling penguins.

It’s as visually breathtaking as its cities are varied. The hustle and bustle of Johannesburg contrasts sharply with the fun-loving seaside ambience of Durban and the European-chic style of Cape Town. In-between are game reserves and wilderness, quaint towns and coastal resorts, all easily explored by the excellent road network (we can of course organise chauffeur-driven transfers and internal flights), or by the legendary luxury of Rovos Rail.

Two favourite areas though are the Garden Route, famed for its pretty towns, superb seafood and amazing whale-watching and the Cape Winelands – their fertile valleys home not only to some of the world’s best wines, but also some of its finest restaurants. Both have their own distinctive beauty and unique landscapes, coupled with luxurious places to stay.

South Africa is full of great contrasts and vibrant colour, unrivalled natural beauty and never-ending vistas. And although its people and culture are equally wide-ranging – for example, there are no fewer than 11 official languages (although English is the main one) – they unify this country wherever you travel. South Africans are among the most upbeat, welcoming and humorous people you’ll find anywhere and they bring a new vitality to this fascinating destination.



CAPETOWN

SOUTH AFRICA

It has to be one of the world's most beautiful cities. Sandwiched between iconic Table Mountain and the Atlantic Ocean, this enclave of European elegance combines a whole lot of history with a real sense of fun. Must-dos include the mountain itself of course, the fab beaches and bars of wealthy Camps Bay and Clifton and the revitalised and fashionable Victoria & Alfred Waterfront. The lively centre, around Long and Kloof Streets, is easily explored on foot to really take in the ambience as well as the colourful African crafts, eclectic restaurants, fascinating museums and world-class hotels.



THE SILO

Victoria & Alfred Waterfront

A more recent addition to The Royal Portfolio's divine collection, this magical space towers above the V&A Waterfront. Built in the grain elevator portion of the historic grain silo complex, it occupies the six floors above the Zeitz Museum of Contemporary Art Africa.

From £350 per person per night, breakfast





ONE & ONLY

CAPE TOWN



Victoria & Alfred Waterfront

If it's the 'greatest hits' of South Africa's most sophisticated city you're looking to experience, look no further than One&Only Cape Town. Combining the chic buzz and picturesque harbour setting of the V&A Waterfront with a breathtaking Table Mountain backdrop, this smart address can't be beaten for its sterling location. And the 'wow factor' doesn't end there: in fact, the whole resort is brilliantly laid-out and thought-through, with guests' enjoyment firmly in mind. The dining is as luxurious as you could wish for (like Michelin-starred Nobu and the brasserie's tantalising fusions of flavours care of local celebrity chef Reuben Riffel); the infinity-edged pool is vast; the island spa über-sumptuous and there's plenty for younger travellers too, thanks to the fully supervised KidsOnly programme.

From £185 per person per night, breakfast



ELLERMAN HOUSE & VILLAS

Bantry Bay

Perched on the slopes of Lion's Head with to-die-for coastline views, Ellerman House and Villas feels very much akin to that of a glamorously seductive French Riviera hideaway. Once the stately home of distinguished shipping magnates and investors Sir John and Lady Ellerman, the prestigious Bantry Bay address of this elegant Cape Edwardian mansion (with just 11 luxurious rooms and two sumptuous villas) puts you in walking distance of famous Clifton Beach, just 10 minutes by car from the centre of Cape Town and 45 minutes from the Winelands. That is, of course, if you can tear yourself away from the flawless service, low-key glamour and splendid isolation, not to mention the poolside gardens, shaded verandas, stunning spa and unmissable South African art collection.

From £295 per person per night, breakfast







CAPE GRACE

Victoria & Alfred Waterfront

Cape Grace melds modern luxury with Cape culture, resulting in a surprisingly peaceful and secluded vibe considering its setting in such a lively area. Service and attention-to-detail are phenomenal, with a fantastic spa and the superb Signal Restaurant. There's even a five-metre luxury yacht available for the exclusive use of guests.

From £165 per person per night, breakfast



BELMOND MOUNT NELSON HOTEL

Gardens Suburb

Cape Town's iconic 'pink palace' in the heart of the city may be known for its colonial feel but, instead of stuffiness, 'The Nellie' welcomes you with a certain youth and energy. Updated guest rooms now include all sorts of mod cons and opulent décor; plus it's home to Planet, the city's hottest bar and restaurant, too.

From £135 per person per night, breakfast

SEA FIVE BOUTIQUE HOTEL

Camps Bay

Light, airy and spacious, Sea Five is a beach house with a super-gorgeous edge. It's just 300 metres from Camps Bay (South Africa's most glamorous beach); the seven individually designed rooms have a real Afro-Mediterranean feel; and the sweeping 360° views are outstanding... as is the service.

From £95 per person per night, breakfast





CAPE TOWN

PRIVATE HOMES

Say hello to some of the finest contemporary homes in all of South Africa – The Royal Portfolio’s spectacular new collection of four- to six-bedroom private villas set along the city’s Atlantic Seaboard in Bantry Bay and Clifton. Designed by the country’s top architects, they’re the perfect complement to The Royal Portfolio’s iconic hotels and lodges. On top of the privacy, freedom and comfort you get when staying in a private home, round-trip airport transfers, high-speed Wi-Fi, an on-site manager, housekeeping team, private chef and a 24-hour off-site concierge services are included in your stay; plus you get the very best of both worlds as you’re also considered guests at the divine, centrally located Silo Hotel, meaning you’ve access to all of its award-winning amenities just 15 minutes away by car.





BEYOND

Clifton

Suspended over the highest point in Clifton, with breathtaking views of the Atlantic Ocean, Beyond is a six-level luxury villa, designed as a timeless wonder by leading South African architecture firm SAOTA. This incredible property is, quite literally, beyond anything you've ever seen before, with its six en-suite bedrooms and multiple open-plan entertainment areas including a glass-floored bar, private cinema, gym, sauna, steam room and rim-flow pool. Step into luxury and be amazed.

From £610 per person per night, breakfast (based on 12 people sharing)





OBISDIDIAN

Clifton

Set high up on the slopes of Lions Head in Clifton and designed both to blend in with the mountain and maximise the magnificent views of the 12 Apostles mountain range, Lion's Head itself and the Atlantic Ocean, this five-level luxury villa is a granite and glass-designed masterpiece from leading South African architecture firm SAOTA, with tasteful interiors that generate a real sense of coastal serenity from the moment you walk through the front door.

From £360 per person per night, breakfast (based on 10 people sharing)





SEA LION

Fresnaye

Epitomising the very mountain upon which this magnificent property has been built, Sea Lion rests at the foot of Lion's Head in Fresnaye. Protected from the wind in one of Cape Town's most prestigious neighbourhoods, the position of this granite- and marble-textured villa means plenty of opportunity to appreciate the unparalleled views of the Atlantic and Robben Island from every single room; while superb attention to all aspects of the interior design ensures each and every area of the home and its en-suite bedrooms are individually distinct and über-luxurious.

From £610 per person per night, breakfast (based on 8 people sharing)





VILLA 196

Bantry Bay

As you step out onto the marble pool-deck of this five-bedroomed, sun-soaked hideout in the heart of Bantry Bay, the sun shines down on your face; the crisp sea air rising off the Atlantic, filling your nostrils and invigorating your soul. Spread over five levels, it's the ultimate entertainment villa, with a large, casually styled media room; a gym; private Jacuzzi; pool-deck and eye-popping, uninterrupted views stretching across the ocean and out towards the distant horizon.

From £455 per person per night, breakfast (based on 10 people sharing)



WINELANDS

Spectacular. It's a word that describes so many aspects of the restful Cape Winelands, just an hour outside Cape Town. Take the scenery, for example – lush, fertile valleys nestling among rugged mountains; grand estates punctuated by gorgeous white-washed Cape Dutch buildings; and historic 17th-century towns such as Stellenbosch, Franschhoek and Paarl, founded by the original French and Dutch settlers. The wine and cuisine are amongst the world's finest, created with a passion and expertise that's matched only by unbelievable top-notch accommodation: from sumptuous, richly decorated suites, to über-stylish lodges.

LEEU ESTATES

Franschhoek

This sophisticated five-star country house hideaway and boutique winery boasts 20 contemporary-classic, individually styled rooms and suites and six spacious cottages; 168 spectacular square-acres of vineyards, gardens and fynbos; museum-worthy art; exciting food and special wine and lifestyle experiences.

From £275 per person per night, breakfast



DELAIRE GRAFF LODGES & SPA

Stellenbosch

The Winelands are home to some fabulous hotels – but this one's rewritten the rulebook. All 10 spacious lodges, carefully positioned for perfect views, have equally stunning interiors, a heated infinity plunge pool and contemporary art from Laurence Graff's own private collection. And elsewhere there's an über-stylish restaurant, a restorative spa and private cinema.

From £375 per person per night, breakfast



MONT ROCHELLE

Franschhoek

With grounds covering around 100 acres, Sir Richard Branson's stunning 26-bedroom hotel and vineyard is just ripe for exploring. When you're not sampling the 91-acre vineyard and 150-year-old cellar, the cosy bar, two restaurants, spa treatments and heated pool, why not take a well-stocked picnic basket and chilled bottle of wine out with you when exploring more of the area?

From £130 per person per night, breakfast





LA RESIDENCE

Franschhoek

The extravagant décor, the views, the clean crisp air, the scent of wild flowers... La Residence serves up a real assault on all of your senses. The exquisitely decorated suites are nothing short of perfection and, with vineyards, orchards and gardens all around, dining is a celebration of the finest produce too.

From £350 per person per night, breakfast



BABYLONSTOREN

Franschhoek

One of the oldest, best-preserved Cape Dutch farms in the heart of the Winelands, Babylonstoren sits on 200 acres of remarkable organic farmlands, orchards, formal vegetable gardens and vineyards. Overlooking these landscapes, 14 cottages are found in stunningly converted 17th- and 18th-century Cape Dutch farm buildings which give little hint to the graceful interiors that marvellously mix rustic with contemporary.

Days are intentionally unscripted leaving you to do as you please: taking a stroll through the farm to see fruit being picked in the orchards or vines being pruned, picking your own salad to enjoy at lunch, or joining in and assisting with harvesting, pruning and planting in the eight-acre vegetable garden (season depending). Or, if you're feeling a little more active, cycling through the grounds, taking a walk down to the clivia-lined river, taking a swim in the farm dam, or blissing out at the spa with a massage... all before superb sundowners at a local picnic spot. Heavenly.

From £195 per person per night, breakfast

GARDEN ROUTE

After Cape Town and Kruger, this is South Africa's most popular destination – and one of the world's best road trips with so much packed into a few hundred miles. Famed for its pretty towns, superb seafood and amazing whale-watching, the Garden Route is home to nature's finest – 130 miles of wild forests, hidden valleys, majestic mountains and mile after mile of unspoilt beaches. Along the Southern Cape you'll find Hermanus – the whale-watching capital of the world – its rocky coastline perfect for daily sightings; while inland is the Klein Karoo, with its towering peaks and ostrich farms. Further east, the oceanside journey passes through three destinations that are just as popular: the pretty seaside town of Mossel Bay, charming Knysna with its glorious lagoon and, most fashionable jewel of all, Plettenberg Bay – stretching as far as Storms River.



BIRKENHEAD HOUSE & VILLA

Hermanus

Watching whales from this stunning clifftop retreat is just part of the attraction – out of whale season, you can go scuba-diving, shark-diving, quad-biking, kayaking and more. The whole place all feels super secluded and very ‘adult’; in fact, under-12s can’t stay in the hotel’s 10 rooms, though families can book the separate villa next door.

From £225 per person per night, all-inclusive

OCEAN ELEVEN

Hermanus

With 10 suites of white-washed colonial loveliness, Ocean Eleven more than lives up to its name with all-embracing views of Walker Bay. It feels more like a boutique hotel than a guest house: the light and airy breakfast conservatory having particularly good views of the whales in season. Fantastic value too.

From £95 per person per night, breakfast

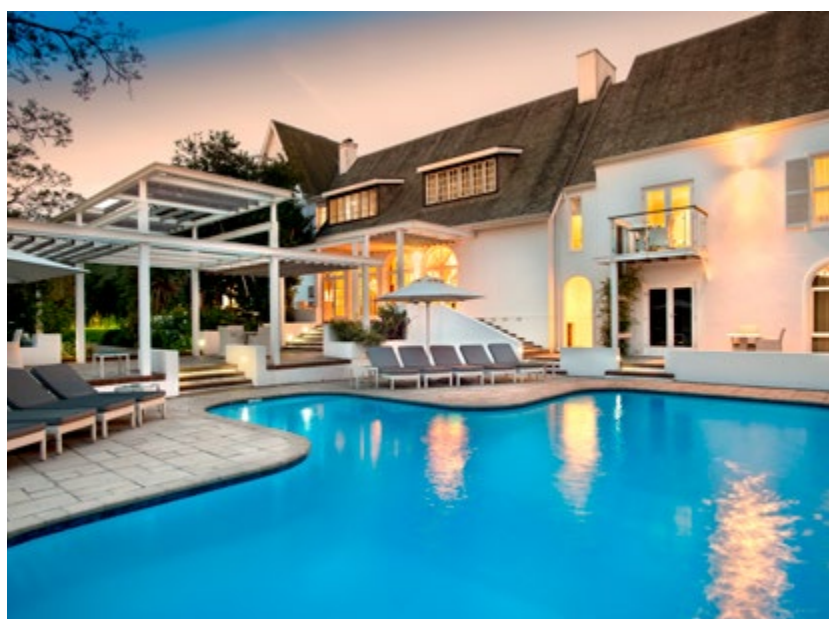


THE MANOR HOUSE AT FANCOURT

George

Fancourt is one of the world's best golf resorts and its original homestead is now a boutique hotel that mixes old-world charm with crisp, contemporary luxury. Its 18 sumptuous suites offer butler service and you've full access to the property's wonderful spa and world-class golf courses.

From £215 per person per night, breakfast



GROOTBOS PRIVATE NATURE RESERVE

Gansbaai

One of our favourite places in all of Africa, idyllically located in fynbos-covered hills overlooking Walker Bay, with a host of incredible, one-of-a-kind experiences. Nestled between mountain and sea, you're enveloped in rare flora and fauna with super-easy access to the Marine Five: whales, sharks, dolphins, seals and penguins.

From £215 per person per night, full board



THE PLETTENBERG HOTEL

Plettenberg Bay

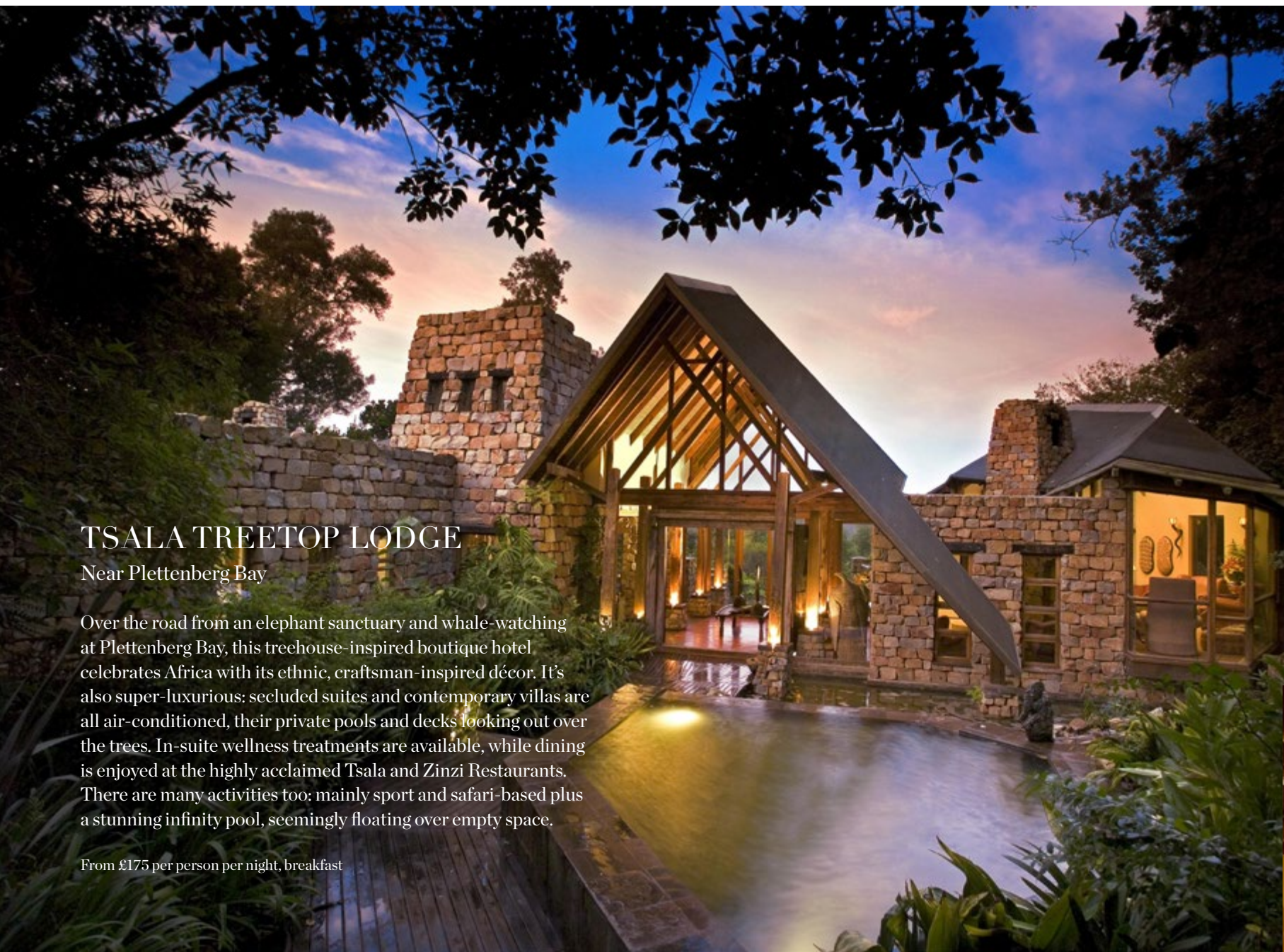
When you're exploring somewhere as mesmerising as the Garden Route, you'll want to stay somewhere that's guaranteed to knock your socks off. And The Plettenberg – probably the area's prettiest hotel – is just that. Breathtaking is the only way to describe Plettenberg Bay's sea and mountain vistas; and from the outside in, this place is truly divine.

The 37 individually designed rooms are oh-so-inviting with charming, homely detailing and magnificent ocean views; while the Beach House and dreamy Lookout Villa are both ideal when you're in need of a little extra privacy (the latter also ideal for family stays).

But that's not all. Sand, the restaurant, is white-washed, gastronomic loveliness – its 'caught-today' cuisine is fresh and exciting and its cocktails the best in town. The spa is serene and the infinity pool pure watery perfection. And for those times when you and your significant other are feeling particularly romantic, why not arrange an intimate dinner for two in The Plettenberg's award-winning wine cellar, filled with candlelight, flowers and soft romantic music? An absolute must for any special occasion.

From £105 per person per night, breakfast





TSALA TREETOP LODGE

Near Plettenberg Bay

Over the road from an elephant sanctuary and whale-watching at Plettenberg Bay, this treehouse-inspired boutique hotel celebrates Africa with its ethnic, craftsman-inspired décor. It's also super-luxurious: secluded suites and contemporary villas are all air-conditioned, their private pools and decks looking out over the trees. In-suite wellness treatments are available, while dining is enjoyed at the highly acclaimed Tsala and Zinzi Restaurants. There are many activities too: mainly sport and safari-based plus a stunning infinity pool, seemingly floating over empty space.

From £175 per person per night, breakfast



HUNTER'S COUNTRY HOUSE

Near Plettenberg Bay

Hunter's fragrant, colourful gardens create an idyllic setting for this super-luxurious retreat. All 19 suites have a private patio and garden (some also have a plunge pool) and you can soak up the sun by the pool, watch the kids play at Cubs Corner (teens have their own hangout), relax with a pamper treatment (on request), feast on country-style fare in the House itself, or explore the à la carte options of award-winning Zinzi just a short stroll away.

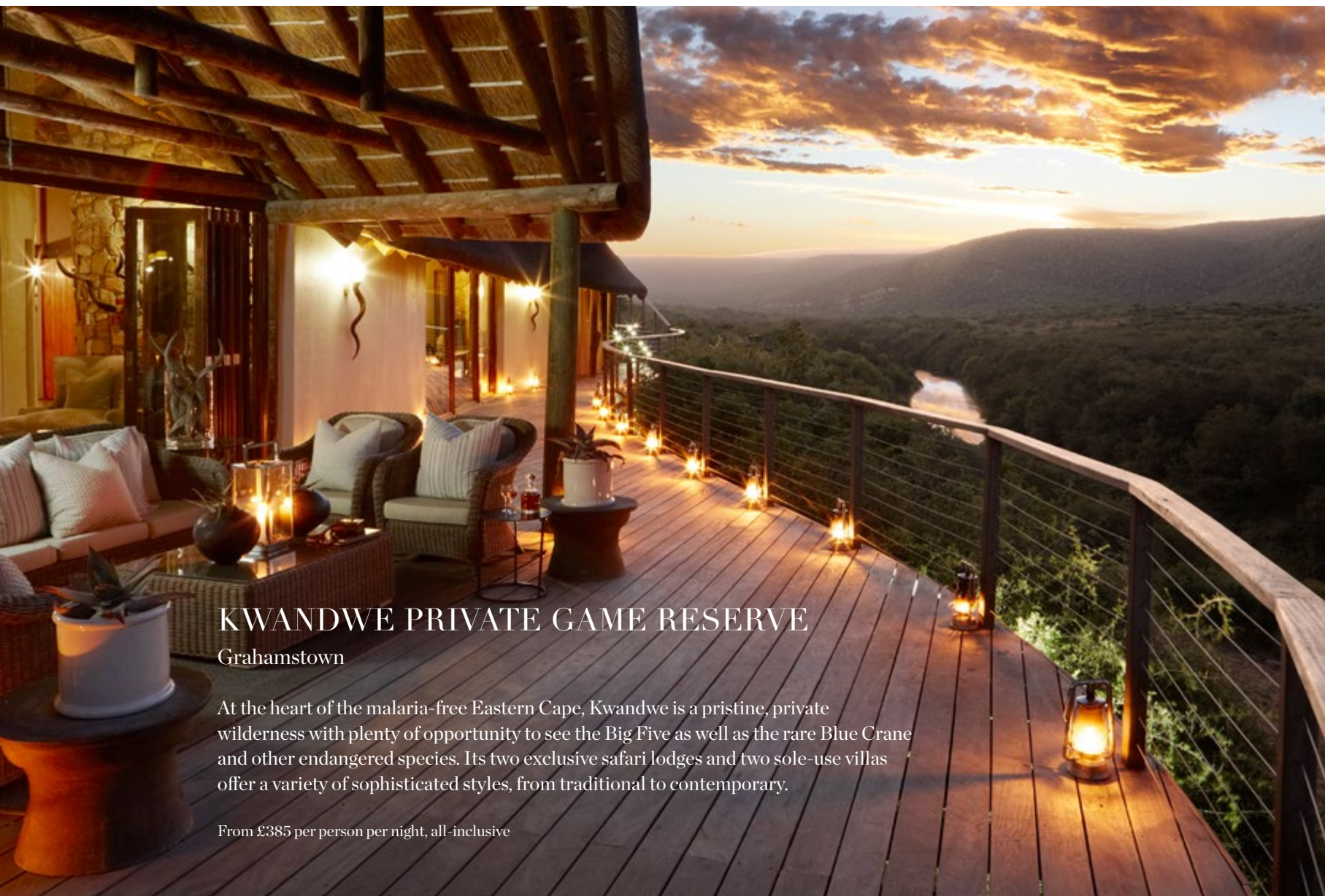
From £60 per person per night, breakfast

AMAKHALA GAME RESERVE

Eastern Cape

An 18,000-acre reserve converted in 1999 from agricultural land to a joint conservation venture, around 40 minutes north-east of Port Elizabeth, Amakhala boasts a choice of luxury lodges and a variety of unique experiences, including river cruises and game-viewing (with all of the Big Five present) under the guidance of professional rangers.

From £315 per person per night, all-inclusive

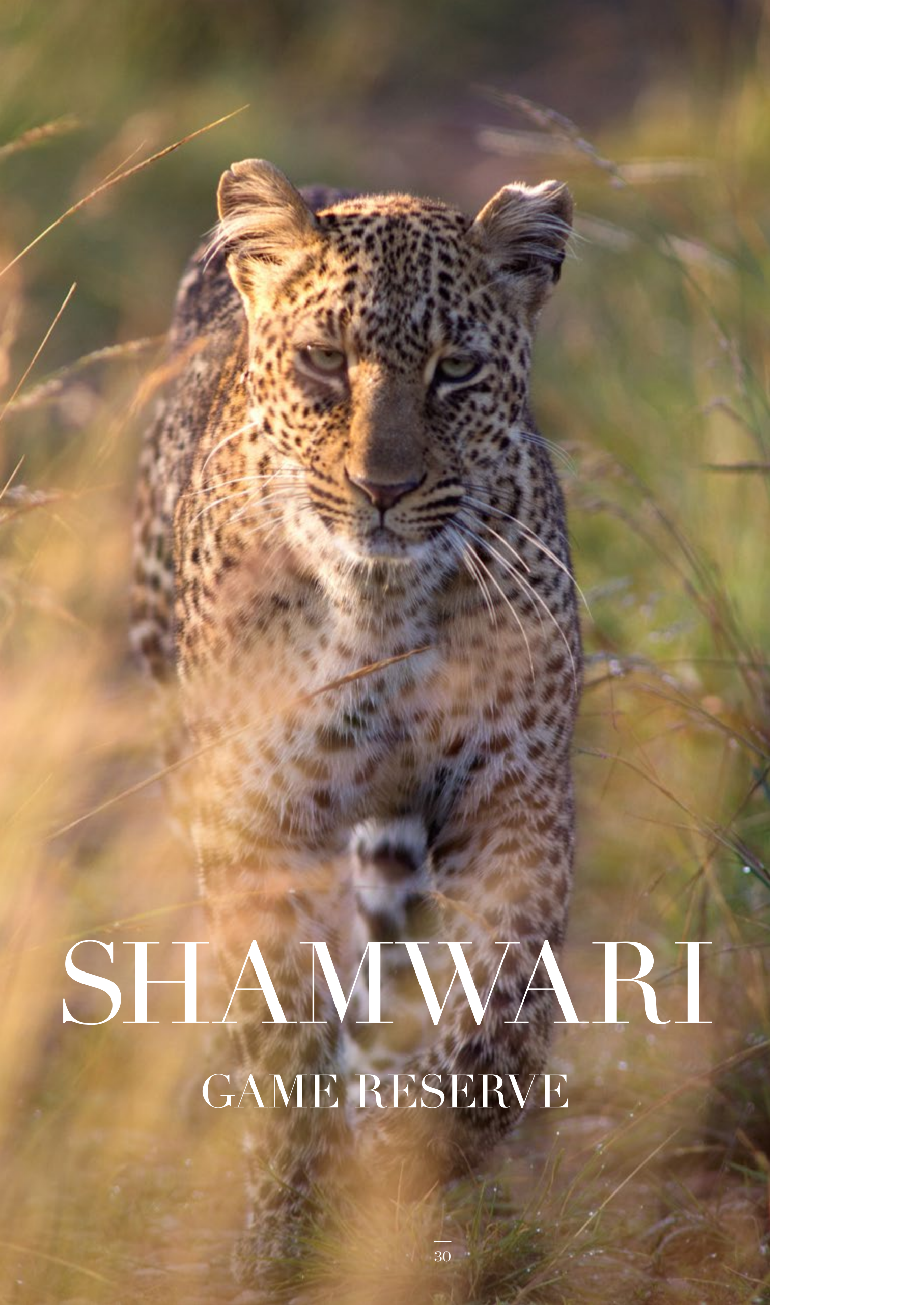


KWANDWE PRIVATE GAME RESERVE

Grahamstown

At the heart of the malaria-free Eastern Cape, Kwandwe is a pristine, private wilderness with plenty of opportunity to see the Big Five as well as the rare Blue Crane and other endangered species. Its two exclusive safari lodges and two sole-use villas offer a variety of sophisticated styles, from traditional to contemporary.

From £385 per person per night, all-inclusive



SHAMWARI
GAME RESERVE



Eastern Cape

Not only is Shamwari the longest established of the private reserves near Port Elizabeth, but combine its luxury safari lodges with the outstanding work it does with the Born Free Foundation and it's easy to see how it has earned numerous travel industry and conservation awards over the years. Equally perfect whether you're planning your very first safari or explorations along the Garden Route, being in a malaria-free area, it's an ideal choice for families too. The excellent lodges offer every comfort – we'd recommend Eagles Crag (spectacular), Lobengula (authentic) or Riverdene (for families) – plus you're able to get really close to the animals and you should see all the Big Five. Sumptuous meals are enjoyed in the main dining room or around the open fire at The Barn and between game drives why not indulge in a rejuvenating spa treatment? For a once-in-a-lifetime experience, what more could you want?

From £295 per person per night, full board

-NATAL

Smart and sophisticated, rural and rustic, KwaZulu-Natal is as eclectic as its cultures, people and landscapes. Durban, with its sublime Indian Ocean beaches, is typical. It's a tropical urban gem, growing in sophistication – but what sets this place apart is its rich ethnic cocktail, with half the population Zulu and a fifth Indian. Inland is the colonial capital of Pietermaritzburg and, further north, Zululand and the Battlefields Route: steeped in historic sites and traditional settlements. Over on the western border is Drakensberg – awesome and unforgettable, its dramatic cliffs and panoramas inspiring Middle Earth in a young Tolkien. And dotted throughout are wildlife-rich national parks and isolated coastal reserves. It's a heady mix alright!

KWAZULU

THE OYSTER BOX

Umhlanga Rocks

Right on the ocean's edge (so much so it even has its own lighthouse), this iconic landmark on a wonderful stretch of coastline has been lovingly restored to deliver an exceptional experience. Contemporary, yet with just enough nostalgia, its elegant rooms, cool terrace and exotic detail are matched only by the attentive staff.

From £195 per person per night, breakfast



FUGITIVES' DRIFT LODGE & GUEST HOUSE

Rorke's Drift

Fugitives' Drift is right in the heart of the Battlefields and offers a choice of 'camps': The Lodge, with its luxury en-suite cottages and The Guest House, complete with individually decorated bedrooms and sweeping views. But the real gems here are the Battlefields tours: moving, enthralling and mesmerising – don't miss them.

From £115 per person per night, full board



CLEOPATRA MOUNTAIN FARMHOUSE

Drakensberg

A true five-star lodge, Cleopatra's 11 rooms are lovingly furnished in 'contemporary-rustic' style. But the real passion here is in the food. Chef Richard Poynton turns the fruits of his land into exciting breakfasts and memorable seven-course feasts, all ready to be walked off on a mid-morning hike into the mountains.

From £195 per person per night, breakfast



andBEYOND PHINDA PRIVATE GAME RESERVE

Phinda Private Game Reserve

Seven different African eco-systems meet within Phinda's 56,800 acres, with game-viewing, walking safaris, river cruises, canoeing and night drives to be enjoyed. The stunningly designed lodges have terrific views – so for the full experience, stay in both Rock Lodge on the rocky cliffside and Vlei Lodge, by the open wetlands.

From £375 per person per night, all-inclusive

THANDA PRIVATE GAME RESERVE

Hluhluwe

If a 'spa-fari' is what you need, there's nowhere better than Thanda. Choose between the main lodge with nine spacious bush villas, or the safari-style tented camp – both lavishly appointed. In addition to superb game-viewing, it's the blissful award-winning spa you'll fall for... which is appropriate, as Thanda is Zulu for love.

From £250 per person per night, all-inclusive



EDEN ADVENTURES

THE FAIR CAPE | 8 NIGHTS

2 NIGHTS *ELLERMAN HOUSE* | CAPE TOWN

3 NIGHTS *BIRKENHEAD HOUSE* | HERMANUS

3 NIGHTS *LA RESIDENCE* | FRANSCHHOEK

FROM £3650 PER PERSON

HIGHLIGHTS

1 Go to Jail. Robben Island is (in)famous as the place Nelson Mandela spent most of his time in prison and it remains a big attraction to this day; its fascinating and profoundly moving talks and tours from former political prisoners providing real insight. Pre-book before you travel – it's that popular.

2 Take a Hike. You can't leave Cape Town without taking in the end-of-the-world views from the top of Table Mountain (particularly at sunset). Walk one way and take the cable car the other to make the most of the unbelievably rich flora that covers the mountain from March to September.

3 Whales from the Air. The Southern Right Whale can be seen all along the coastline of the Western Cape from June to November and is best spotted from Hermanus. We reckon the greatest view of these majestic creatures is from an aerial flight though, where the white beaches and rocky shoreline are framed by the Cape Mountains. Totally unforgettable.

4 Franschhoek Festival. One of the best times to visit Franschhoek is the weekend closest to 14 July when it paints the town red, white and blue. In celebration of its French Huguenot heritage, the lively Bastille Festival includes a wine and gourmet fair, the world's oldest boules competition, a minstrel parade and more (incidentally, Franschhoek literally means French Corner).





MPUMALANGA & GAME RESERVES

‘Safari’ literally means ‘journey’. And a journey here takes you straight to the heart of some of the world’s premier game-viewing. Best-known is Kruger National Park, so big that even with 1.5 million visitors each year, only five percent of it is ever affected. Its wildlife is easily accessible too, especially in private reserves like Sabi Sand in the west and the Timbavati. Prefer scenery to safari? Head to Mpumalanga and the Panorama Route for astonishing landscapes and the magnificent Blyde River Canyon – the third largest in the world – the ideal base there being White River, a small town perfectly placed for this particularly unforgettable journey.

ROYAL MALEWANE



Thornybush Private Game Reserve, Hoedspruit

Another of The Royal Portfolio's excellent 'one-of-a-kind' properties (La Residence, Birkenhead House, The Silo and 'The One Above' being the others), Royal Malewane exudes the romance and beauty of a bygone age. Lavish and palatial colonial-style thatched suites boast rich dark wood terraces and infinity pools and are filled to the brim with rich antiques, Persian carpets and every modern comfort.

Upping the luxury ante even further are the sumptuous two-bedroom Royal and Malewane Suites (which come with four daily massages, private game drives, a private butler and chef). Then, just a short drive from Royal Malewane itself is Africa House – a six-bedroom bush villa complete with a private boma for special dinners under the stars and, the most recent addition, The Farmstead, comprising The Farmhouse – a three-and-a-half-bedroom private villa, plus three individual Luxury Farm Suites. The Farmstead (if booked in its entirety for exclusive use), The Farmhouse and Africa House are each fully staffed, with a dedicated ranger, tracker and private game-drive vehicle, making them great options for accommodating the entire family.

But regardless of where you choose to stay at Royal Malewane, you can be assured the classic safari experience will be unsurpassed, with fantastic game-viewing and a highly qualified guiding team who'll get you thrillingly close to the Big Five. And while you're not out exploring all that the bush has to offer, there are sensual treatments at the tranquil Waters of Royal Malewane Bush Spa to indulge in, before the awesome chefs delight you with nightly feasts under the African stars and served on the very best china.

From £1475 per person per night, all-inclusive





CHITWA

Sabi Sand Game Reserve

Named after a giraffe that once visited the adjacent lake and beautifully designed to let the outside in, Chitwa Chitwa mixes African and eclectic European styles in a really imaginative way to create gorgeous, unbridled luxury. And while nothing can compete with the sheer beauty of the setting, the two-bedroom Chitwa House offers even more exclusivity – plus its own butler and ranger.

From £560 per person per night, full board

CHITWA



• singita •

PRIVATE GAME RESERVES

Presiding over almost 45,000 acres of prime South African game-viewing land, Singita's lodges provide authentic jaw-dropping, eye-popping experiences, rare solitude and the ultimate in safari luxury – each living up to every single accolade bestowed upon them.

Commanding two distinct but equally breathtaking locations, you're guaranteed to leave with a lifetime of superb memories whether you choose to stay in the Sabi Sand Reserve or the Kruger National Park. Each lodge boasts world-class service, sparkling pools, cosy lounges, excellent spa facilities and Mini-Rangers kids' programmes, not to mention wide candlelit decks from which to enjoy the sunset with a glass of something special from the well-stocked wine cellar in-hand, plus traditional open-air bomas for fine-dining under African skies.

In Sabi, the pair of unfenced sleek modernist lodges, Ebony and Boulders, are surrounded by open grassland and bush, with bang-up-to-date luxuries like indoor and outdoor showers and private wooden game-viewing decks with their very own plunge pool. Boulders has a modern, natural palette; while recently revamped Ebony takes safari style to a whole other level in its tent-style suites that maximise views and space. For groups of friends or families there are now more interconnecting suites at Ebony, as well as the recently added Singita Ebony Villa. Or, for even more privacy, the separate 12-person Singita Castleton Lodge – with its own tennis court, pool and trampoline – is a must.

Meanwhile in Kruger guests experience Africa a little more 'au naturel', with large herds of zebra and wildebeest wandering around close by. Clifftop Lebombo's suites offer an eagle's-eye view of the valley, with a loft-style ambience and an expansive use of glass to enhance the amazing views. Sweni's suites on the other hand – set high on stilts above the flow of the Sweni River – have a more archetypal safari feel, embellished with African artefacts, glass and bleached branches.

But the beauty of staying with Singita is not just that they're arguably among South Africa's most opulent lodges. It's that they are located in their own private concessions – areas within the parks reserved solely for lodge guests and not the general public. So as well as excellent local guides and twice-daily Land Rover safaris designed to give you the best possible chance of seeing the continent's unique, wonderful animals, you also get the most rewarding, exclusive, private safari experience in pristine wilderness, with off-road game drives and night drives to track or view animals from an even closer perspective – experiences that just aren't possible in the public areas of the national parks.



SINGITA CASTLETON

Sabi Sand Game Reserve

Set in 45,000 acres of untouched wilderness teeming with wildlife, Singita Castleton offers a quintessential, intimate and exclusive African bush experience.

The former home of the grandfather of Singita Founder Luke Bailes, this beautiful stone-walled private homestead accommodates up to 12 guests in its six double en-suite cottages and comes complete with a field guide, chef and host; a tennis court, trampoline, fully equipped gym, library and spa. Deep, furnished verandas overlook tree-shaded lawns and the expansive swimming pool, while the outdoor boma is the perfect spot for magical fireside dinners under the stars.

From £1250 per person per night, all-inclusive
(based on 12 people sharing)



SINGITA

BOULDERS LODGE

Sabi Sand Game Reserve

Set along the boulder-strewn banks of the Sand River in Singita's privately owned reserve within Sabi Sand, Boulders has a unique sense of place and seamlessly merges the light, shapes and mood of its environment. The lodge itself was inspired by the ancient boulders on which it rests; its temperature-controlled wine cellar – featuring an award-winning collection and personalised tastings – built around some of the organic-shaped rocks found on-site during construction. Further loveliness awaits in the main lodge, with its gym, library and excellent Bush Spa.

Expansive decks and walkways invite continuous engagements with the surrounding wilderness, while each of the 12 spacious, glass-fronted suites (set apart for total privacy and including two family suites) comes with hand-made furnishings, luxuriously textured fabrics that echo the raw African beauty outside and bang-up-to-date luxuries like indoor and outdoor showers and private game-viewing decks: each with its very own plunge pool and a great spot for sundowners over a glass or two of something special from the afore-mentioned well-stocked wine cellar.

From £1550 per person per night, all-inclusive

SINGITA

LEBOMBO LODGE



Kruger National Park

Sleep under South African stars and experience the ultimate safari in the heart of the Kruger.

Sleek, smart modernity in a clifftop setting with world-beating river views is the order of the day at Lebombo; and while none of the 15 stylishly contemporary, glass-encased loft-style suites interconnect, the day-bed on your private balcony can easily be used for kids sharing with their parents (it also means you yourself can camp out under the star-filled skies if you're feeling more a little more adventurous).

The main lodge itself boasts a sparkling pool, a cosy lounge and a spa with a wealth of skin and body treatments. And the wildlife viewing is equally superb, with all the big hitters of the game world – including lions, elephants, cheetahs and rhinos – regularly stopping by for a visit.

From £1225 per person per night, all-inclusive



SINGITA

EBONY LODGE

Sabi Sand Game Reserve

For the ultimate in luxury safari experiences, we can't think of anywhere better than Ebony Lodge. Think Ralph Lauren meets Out of Africa – a cosy lodge with a warm, intimate atmosphere and an eclectic mix of colonial grandeur, chunky wooden furniture, vintage African fabrics and antiques alongside every modern luxury you'd think impossible in the heart of the bush.

Standing steadfast among enormous trees on the banks of the Sand River, this idyllic family retreat is set in the heart of Big Cat country. Each of the 12 luxurious suites includes its own private plunge pool and almost all external walls have been replaced with glass and canvas to optimise views and space. Outdoor decks suspended off the river banks invite laid-back dining and relaxing, allowing guests to be fully immersed in the natural surrounds. Families haven't been forgotten here either: two Lewis Suites right next to each other are ideal for families with teenagers and two Family Suites are a great option for families with younger children.

From £1550 per person per night, all-inclusive



SINGITA

SWENI LODGE

SOUTH AFRICA



Kruger National Park

Tucked into the banks of the Sweni River, this intimate lodge is a hidden jewel that provides a bold, new African context for contemporary design, architecture and cuisine. Exuding glamour and subtle sophistication, the seven suites are hidden among a canopy of trees, each with open-plan interiors; rich, calming colours and textures that echo the hues of the natural surroundings; a generously stocked mini-bar; two bathrooms and an outdoor shower overlooking the river – all adding to the feeling of being enveloped within an ancient forest. And with such proximity to the river, your deck is the perfect spot to enjoy the sights and sounds of the incredible wildlife that wander down to drink from, or wallow in it.

Families can enjoy the run of Sweni on an exclusive-use basis too, all with Singita's signature, 'made-to-order' experience, designed specifically for you and your loved ones – so there are no restrictions or set schedules, just ample opportunity for all generations to spend time together, unwind and share some of the most life-changing safari adventures imaginable.

From £1225 per person per night, all-inclusive



LONDOLZI

PRIVATE GAME RESERVE



Sabi Sand Game Reserve

Pioneering, soulful and addictive (right down to the home-made muesli) and a labour of love for the Varty family for over 90 years, Londolozi is simply incredible from start to finish. Five award-winning, impeccably styled riverside lodges; a brilliant Cubs' Club and wellness centre; guides who make every bush experience as electrifying as they come; and boma banquets with lively, heart-warming performances from the wonderful Londolozi Ladies Choir. It's all absolutely unforgettable and you'll almost certainly want to return time and time again.

From £795 per person per night, all-inclusive

LEOPARD



Sabi Sand Game Reserve

Aptly named and overlooking a natural waterhole close to the Sand River, Leopard Hills' eight glass-fronted luxury suites (each with its own sun-deck and plunge pool) each have fantastic views across the bushveld for superb game-viewing. It's a popular wedding location too: with everything expertly organised by management couple Louise and Duncan who've been here right from the start.

From £895 per person per night, all-inclusive

ULUSABA

PRIVATE GAME RESERVE



Sabi Sand Game Reserve

Meaning 'Place of Little Fear', the Ulusaba experience is brimming with fascinating sights, breathtaking wilderness and sunrise safaris – perfect for seeking out the 'Big Five' and taking time out to kick back and relax. A private reserve set in the heart of the game-rich Sabi Sand Game Reserve, it's home to two different styles of luxurious lodges – Rock Lodge and Safari Lodge.

Carved into a natural rock-face, Rock Lodge is perched high on the summit of a kopje (rocky hill): its rooms boasting amazing panoramic views and ethnic interiors; and its suites ideal for those wishing to bring along little cubs of their own!

Safari Lodge, on the other hand, is set under a canopy of ancient trees along the banks of the dry Mabrak river-bed; its treehouse-style rooms reached by crossing rope bridges – an experience that adds even more to the sense of adventure here.

From £630 per person per night, all-inclusive





CHEETAH PLAINS

EXCLUSIVE HOMES



Sabi Sand Game Reserve

With the Kruger National Park on one side, Mala Mala on the other and no fences in-between, plus private concession traversing rights dictating that only two game vehicles can traverse the individual areas at any one time, exclusivity at game sightings is the norm at Cheetah Plains... so you'll be blown away by the abundant wildlife and unparalleled game-viewing here.

A bold departure from its humble safari lodge beginnings and a sophisticated, innovative eco-luxe safari experience for the modern age, just three ultra-chic, exclusive-use, 'off-the-grid' Plains Houses make up Cheetah Plains. Each is exquisitely appointed, nestled into the camp's indigenous gardens, accommodates four to eight guests and comes with two lounges, a dining area, wine gallery, chef's kitchen, outdoor boma, expansive viewing deck, heated swimming pool and sumptuous private suites. Also included is a private safari vehicle and designated field guide for the duration of your stay, ensuring an unforgettable safari experience from start to finish.

From £1595 per person per night, all-inclusive
(based on 4 people sharing)



GAME RESERVE

This is wilderness Africa at its best. But Madikwe isn't all that it seems – though you'd never know it. Opened in 1991, it was created not so much to protect animals as to use wildlife-based tourism to revive the region's economy. 'Operation Phoenix' brought in over 8000 animals – including elephants, rhinos, buffalos, lions, cheetahs and giraffes – to join the leopards already living there. It means everything's totally geared up for visitors too: a fantastic choice of purpose-built lodges, expert rangers who know the 185,329 acres of beautiful open grasslands inside out and guaranteed game-viewing. It's one of South Africa's best-kept secrets.

MADIKWE

MADIKWE HILLS PRIVATE GAME LODGE

Madikwe Game Reserve

A place of two halves, with a fabulous location overlooking a very active waterhole at the centre of the reserve, the private lodges here are perfect for couples, while the lovely, two-bedroom Little Madikwe House (with its own pool, butler, chef, ranger and game vehicle) is brilliant for families.

From £475 per person per night, all-inclusive

MOLORI SAFARI LODGE

Madikwe Game Reserve

Style on safari? Molori has it in spades, including five very private suites, each individually designed to capture the spirit of Africa, with infinity pools, a terrace with telescope, air-conditioning, Bose sound systems and more. Aside from game drives, there's a wonderful spa, fitness centre... even a state-of-the-art planetarium.

From £695 per person per night, all-inclusive

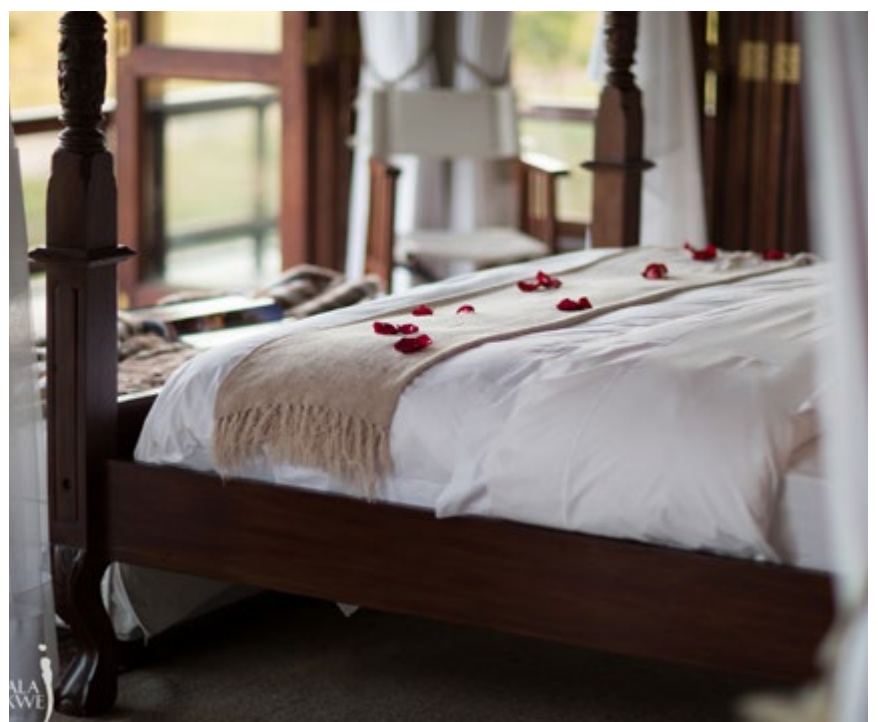


JAMALA MADIKWE ROYAL SAFARI LODGE

Madikwe Game Reserve

Just five gargantuan bush villas at this right royal retreat fuse superlative luxury and intimate privacy with extravagant facilities inside and out (including a polished wooden deck, plunge pool and outdoor shower). Nestled under a grove of ancient Leadwood trees with a waterhole that abounds with wildlife, the service here is attentive and warm and the dining truly decadent.

From £575 per person per night, all-inclusive





MADIKWE GAME RESERVE



MORUKURU

Madikwe Game Reserve

With a choice of Owner's House, River House and the private Farm House, Morukuru is ideal for families. Spacious, stylish and very luxurious, it goes out of its way to make kids of all ages feel super welcome – the experienced staff have a special knack of finding ways to make interacting with nature fun.

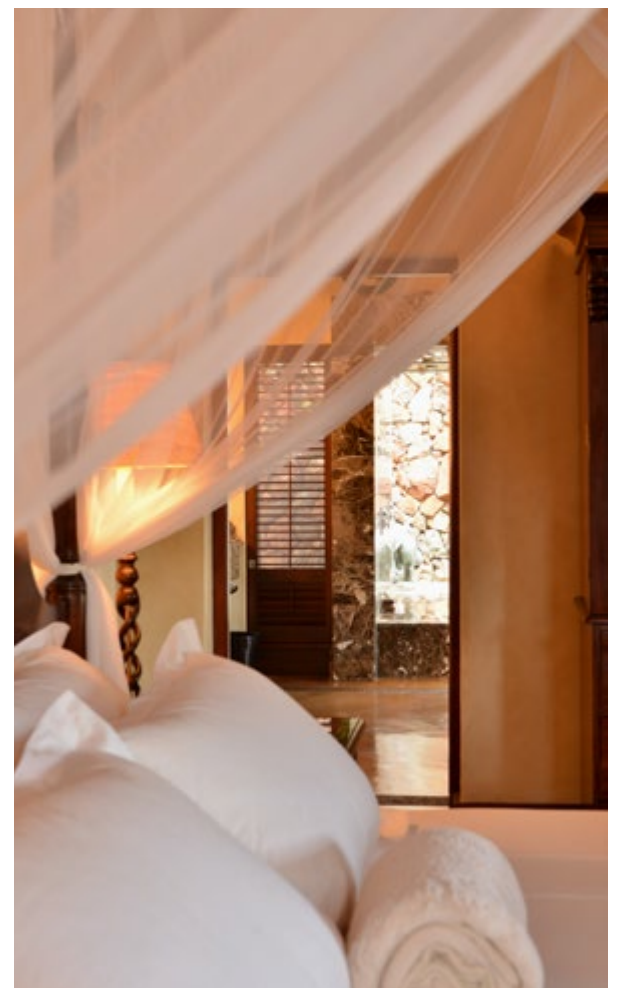
From £495 per person per night, all-inclusive

MATEYA SAFARI LODGE

Madikwe Game Reserve

The art collection says it all. This is a lodge for the discerning traveller, with just five exclusive suites: each with its own private pool and viewing sala. It's beautifully designed, extremely opulent and the whole feel is one of refinement, interspersed with an untamed spirit. Wonderful!

From £625 per person per night, all-inclusive



THE RAIL THING

In a country as large as this, travelling by plane or car means it's easy to miss out on so much, but luxury rail travel with the Blue Train or Rovos Rail is the ultimate of journeys. Relaxing and easy to board, you get a front-row seat to see into South Africa's soul, the landscape unfurling before your eyes as you enjoy opulent surroundings and gourmet meals. We know where we'd rather be...

ROVOS RAIL

The Blue Train may be the best known, but it's not the only way to enjoy luxury on the rails in South Africa. Although only established in 1989, Rovos Rail is altogether a more 'classic' experience and very much a labour of love, grown entirely from the vision of one man, Rohan Ros.

Restored Edwardian sleeper carriages feature handsome wood-panelling and period fittings alongside discreet modern technology like air-conditioning, not to mention the largest rail suites in the world – especially the Royal Suites which take up half a carriage each. This allows room for double or twin beds, a private lounge area, a bar fridge stocked with your choice of drinks and a full en-suite bathroom with Victorian roll-top bath and separate shower.

The suites are complemented by spectacularly comfortable lounge and observation cars and beautifully traditional dining cars complete with fine china, crisp linens and silver. And to round-off the period vibe, Rovos' trains are often hauled by one of seven restored steam locomotives that work out of their own station at Capital Park, Pretoria.

As you might expect, the journeys themselves hark back to a golden age too, with 'train safaris' of up to 14 days taking in destinations as diverse as South Africa's Garden Route or its finest golf courses; Namibia; Botswana; and Dar es Salaam in Tanzania. And if you're looking to view the mighty natural phenomenon of Victoria Falls, Rovos Rail's direct journey from Pretoria is an exciting and unique way to get there.

2 nights from £1315 per person, all-inclusive

BLUE TRAIN

With a regular, scheduled service between Pretoria and Cape Town, the all-suite Blue Train serves up traditional style, impeccable service and modern luxuries (underfloor heating and gold fittings in your private marble-tiled bathroom, crisp cotton sheets, goose-down duvets, air-con, heating, 24-hour butler service and more). With plush public areas for apéritifs, exquisite club and dining cars and legendary gourmet cuisine, it's no wonder it's said to be the ultimate definition of luxury in motion.

So what of the journey itself? It takes around 27 hours to travel the 995 miles through some of the country's most diverse, spectacular scenery (and while it is a scheduled service, there are different off-train excursions depending on the direction you're travelling). The bulk of the time is spent crossing the Karoo: a vast, ancient plateau fringed by mountains and once inhabited by dinosaurs; its baked-red earth now home to warthog, zebra and impala.

If you're heading towards Cape Town, the landscape changes from dry, undulating and brown, to mountainous, lush and green within minutes as the train enters the River Breede Valley and the start of the Cape Winelands. Then, just beyond the town of Worcester, it starts to squirm its way through the narrow passes of the Drakenstein and Slanghoek Mountains before emerging into the cornfields and city suburbs, eventually easing past Table Mountain and into Cape Town station.

From £650 per person per night, all-inclusive





JOHANNESBURG & PRETORIA

Don't overlook these near neighbours – they have so much to offer! Jo'burg is Southern Africa's beating heart and as such is a lively, multi-coloured city. A music and art hub (if you buy any artwork, the shipping's reasonable too), the city centre has been dramatically regenerated, but it's the fashionable suburbs of Melrose and Sandton that are undoubtedly *the* places to be. Just 25 minutes away, Pretoria couldn't be more different. Quiet and relaxed, it's packed with grand edifices like the Union Buildings and wonderful museums – it's perfect if you're travelling on Rovos Rail too, with their private railway station located at Capital Park.



THE SAXON BOUTIQUE HOTEL, VILLAS & SPA

Sandhurst, Johannesburg

Voted World's Leading Boutique Hotel for more than 10 years, this matchless property overlooks magnificent gardens not far from the upscale Sandton, Hyde Park and Rosebank districts. Its spa – and more specifically, the sound therapy treatment – is extraordinarily soothing, but make sure you pre-book as it's very popular...

From £210 per person per night, breakfast



ATHOLPLACE HOTEL & VILLA

Atholl, Johannesburg

On the outskirts of Johannesburg, in the chic, cosmopolitan suburb of Atholl, this small boutique hotel exudes contemporary style and welcomes families and children of all ages. And everything has been designed with your comfort in mind: from the heated pool and landscaped gardens, to the delightful library with its open fire.

From £195 per person per night, breakfast



ILLYRIA HOUSE

Pretoria

Any stay in the refinements of this magnificent colonial villa overlooking the Union Buildings is always memorable, where elegant surroundings meet exceptional service – and boy do we mean exceptional! For instance, there are no menus here: the chef simply prepares whatever you wish to eat. You'll never want to leave.

From £95 per person per night, breakfast

EDEN ADVENTURES

CAPE CRUSADER | 11 NIGHTS

2 NIGHTS *ONE & ONLY CAPE TOWN* | CAPE TOWN

2 NIGHTS *DELAIRE GRAFF LODGES & SPA* | STELLENBOSCH


2 NIGHTS *THE MANOR HOUSE AT FANCOURT* | GEORGE

2 NIGHTS *THE PLETTENBERG HOTEL* | PLETTENBERG BAY

3 NIGHTS *KWANDWE PRIVATE GAME RESERVE* | GRAHAMSTOWN

FROM £4750 PER PERSON

HIGHLIGHTS



1 Horses for Courses. Add a whole new dimension to wine-tasting by doing it on horseback. There are options for beginners and experienced riders and the Cape Winelands is perfect riding country. Ambling peacefully through vineyards and olive groves is an ideal way to explore – stopping occasionally for a sampling, naturally.

2 Hit an Oyster Hotspot. Knysna and oysters go hand-in-hand and the ideal way to discover this delicacy is a boat trip to the oyster beds, where you'll learn the difference between wild and cultivated oysters. July's popular Oyster Festival offers a chance to try them fresh, fried, marinated or baked at over 30 'hotspots' around the town too!



BUSH & BEACH | 11 NIGHTS

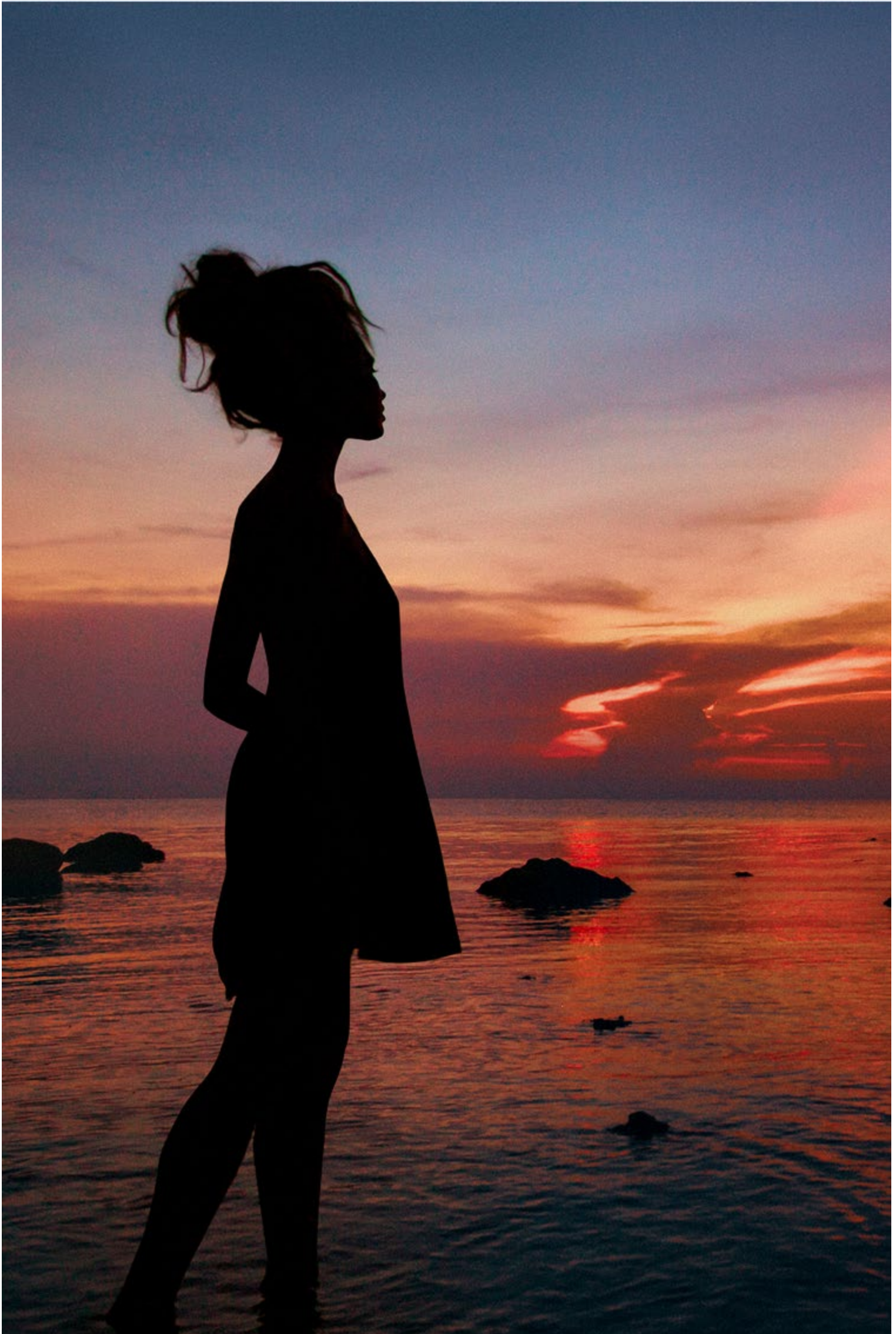
4 NIGHTS *SINGITA BOULDERS LODGE* | SABI SANDS GAME RESERVE
7 NIGHTS *FOUR SEASONS RESORT AT ANAHITA* | MAURITIUS

FROM £8250 PER PERSON

HIGHLIGHTS

1 Walking with Wildlife. It's not just big moments that make safaris so exhilarating. On a walking safari you'll see little things you might miss on a game drive. Not only does it give you a feel for tracking and identifying different prints up close, there's also a 'little five' to discover – rhino beetle, ant lion, buffalo weaver bird, leopard tortoise and elephant shrew.

2 The Great Outdoors. Venture out of town, away from the beautiful beaches of Mauritius and into the forests of the Black River Gorges National Park – home to 300 species of flowering plants – for a bit of take-your-breath-away nature. It does get busy during high season though.



BOTSWANA

Arguably one of Africa's most authentic safari experiences, Botswana's wide-open, uncrowded spaces are home to some of the continent's most diverse landscapes: from arid desert to lush, verdant woods and vast salt pans to the world's largest inland delta.

The ultimate safari destination? Many think so. And there's certainly no shortage of adventure. Its dramatic landscape – nearly three-quarters of it covered by the Kalahari – encompasses vast salt pans, diamond-rich deserts and fertile flood plains teeming with game.

It's a country that looks after its wildlife too, with almost 40 percent of land in reserves and parks. The Makgadikgadi National Park, for example, is an extraordinary, otherworldly place. The light, silence, solitude and sheer vastness of the salt pan – once the bed of a lake the size of Lake Victoria – are just breathtaking. Then, when the rains come, it transforms into a sea of pink flamingos, closely followed by herds of wildebeest, zebra and other mammals in search of precious water.

In the north is Chobe National Park, home to some of Botswana's most varied wildlife and Africa's highest concentration of elephants. Herds are sometimes 400 strong, especially along the riverfront strip in the north. But the jewel in Botswana's crown has to be the Okavango Delta. This unique eco-system the size of Switzerland, where the Okavango River drains into the desert (it's been called the world's largest oasis), has long been a magnet for wildlife.

And on the eastern side of the Delta is the Moremi Wildlife Reserve, where you'll find some of the most scenic landscapes imaginable: legions of elephants, zebras, buffalos, giraffes and hippos and almost 600 species of birds. It's a truly astonishing place.

ZARAFKA CAMP

Selinda Reserve



Created by a husband and wife team of award-winning filmmakers and keen conservationists, Zarafa is an immense, exclusive reserve in the Linyanti, known for its intimate wildlife experiences and perfect for anyone looking for their own 'private Africa'. This is old-school safari: accommodation comprises just four expansive 'marquis' tents, each with three 'rooms'; all beautifully decorated and furnished with custom-made recycled hardwood pieces. The views of the Zibadianja Lagoon – source of the famed Savute Channel – are breathtaking and the same safari styling, conjuring up the traditional early 1900s ambience, continues throughout.

From £795 per person per night, all-inclusive



CHOBÉ GAME LODGE

Chobe National Park

The classic luxury safari option for those wanting to visit Chobe National Park, Victoria Falls and the surrounding areas, historic Chobe Game Lodge feels more like joining a family than simply being a guest in a lodge. A dedicated team ensures every moment of your stay is special and every room (seven of which are interconnecting) overlooks the river. Six comfortably furnished viewing decks overlook Chobe National Park and there are all sorts of spaces for dining and lounging, including the large swimming pool and waterfall – a great spot to cool off on hot afternoons.

From £325 per person per night, all-inclusive

WILDERNESS SAFARIS

An eco-tourism and conservation company with a vast collection of camps, Wilderness Safaris operates privately on seven million acres of Southern Africa's finest wildlife reserves. The camps in Botswana are located in prime game-viewing areas and are some of the most luxurious camps in the country.

MOMBO CAMP

Moremi Game Reserve

Mombo has abundant wildlife – and arguably some of the best big game-viewing in Africa. It's a beautifully designed camp too, with just nine exquisite 'rooms' raised high for magnificent vistas. The décor is fabulous, as are the exotic showers, outdoor terrace and plunge pool – and equally amazing are the activities available.

From £1290 per person per night, all-inclusive



KINGS POOL CAMP

Linyanti Wildlife Reserve

Just nine canvas and thatch 'tents' await: each are huge and plush with spacious bathrooms, outdoor showers, large decks and plunge pools. And with a fantastic lagoon location attracting elephants galore during the dry season – they even graze right into the camp – we can't think of anywhere better to stay in the Linyanti.

From £825 per person per night, all-inclusive



JAO

CAMP

Okavango Delta

Well-placed for land or water safaris, the spacious tents here are lovely, with outdoor showers overlooking the vast floodplains. Because they're built on raised decks (with walkways around the camp making it feel like you're walking in the trees), wildlife can get really close – like the hippos who wander under your room at night.

From £825 per person per night, all-inclusive

WILDERNESS

SAFARIS



ABU CAMP

Western Okavango Delta

Just six elegant guest rooms flourishing the camp's distinctive high, wide and airy canvas style and stylish furnishings throughout (with en-suite bathrooms) mark Abu Camp out as something unique. Even more unique, though, is the chance to interact with the camp's own elephant herd.

From £1390 per person per night, all-inclusive

WILDERNESS SAFARIS



EDEN ADVENTURES

Botswana offers Africa's most authentic safari experience, with dramatic landscapes, spectacular wildlife and fabulous camps. No wonder it's a firm favourite of EDEN's.

For us, it's the ultimate safari destination, built around luxury tourism and with a refreshing attitude to conservation – 40 percent of the land is reserves and parks! The dramatic Kalahari landscapes make for a truly fascinating journey, whether you visit the vast salt pans, deserts or – our particular favourite – the beautiful Okavango Delta.

Days 1-4 – Moremi Concession

Flight Time: 30 minutes (from Maun)

Your charter flight takes you to Mombo Camp in the Moremi Game Reserve (one of the best spots in the Okavango), set at the northern tip of Chief's Island overlooking the open floodplain with its enormous concentrations of wildlife (lions especially). The game drives here are brilliant and you'll more than likely see everything from elephants and buffalo to the big cats.

Stay: Mombo Camp (3 nights)

Days 5-7 – Jao Concession

Flight Time: 10 minutes

If you think Mombo was special, the next part of the trip gets even better. Next stop is Jao Camp in the heart of the Delta. It's remote – one of the beauties of Botswana is its lack of other tourists – and here you'll really see what makes this area unique.

Jao is surrounded by all sorts of habitats from waterways to grasslands and, if you go in the winter months, most of the game-viewing is water-based. That's when the Okavango really comes to life. It's the world's largest inland river delta; its crystal-clear waters soaking away into the Kalahari (that's why it's called 'the Jewel of the Kalahari') and one of the very best ways to see its abundant animal and bird life is by mokoro (a traditional dugout canoe).

It really does give you a completely different perspective!

Stay: Jao Camp (3 nights)

Days 8-10 – Linyanti Wildlife Reserve

Flight Time: 45 minutes

The final stage of your journey is equally special, but for different reasons; if you love elephants, Kings Pool Camp is the place for you!

Located in the vast Linyanti private concession in Northern Botswana's Chobe National Park, this area has Africa's largest concentration of Pachyderms, with herds sometimes 400-strong.

Of course, with cruises on the river and the lagoon attracting all manner of wildlife there's a lot more to see besides; but when they come grazing right into your camp, it's the elephants you'll never forget!

Stay: Kings Pool Camp (3 nights)

Day 11 – Depart Linyanti

Flight Time: 50 minutes (to Maun)

9 nights from £9950 per person



Endless deserts, colossal dunes, dramatic canyons, compelling scenery and quirky towns make Namibia feel like another world... if you're looking for something completely different, there's nowhere else quite like it.

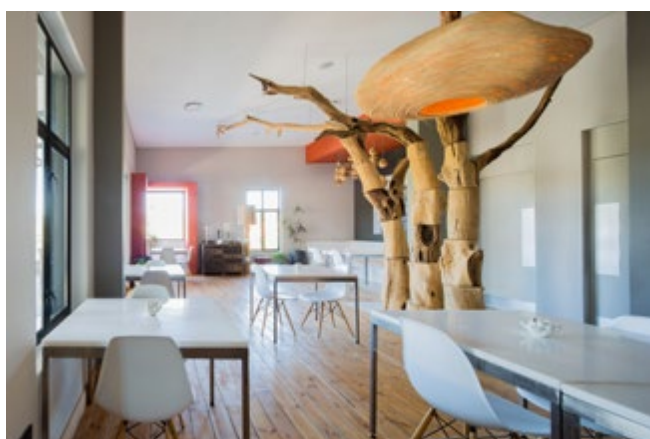
NAMIBIA

A sci-fi landscape. A fantasy outpost. A photographers' paradise. However you look at Namibia, it's guaranteed to make a big impression... with the emphasis on 'big'. It's one of Africa's least densely populated countries, with only two million residents and two seemingly endless deserts – an ideal destination for escaping the crowds.

Inland the Kalahari's vast area of savannah stretches to Namibia's near neighbours, while on the coast is the world's oldest desert, the Namib: an immense sea of red sand with record-breaking dunes as high as mountains. Surprisingly, it's also rich in wildlife, with elephants, lions, rhinos and giraffes... and some very unusual plants!

Other areas are just as dramatic. Damaraland's unforgiving barren landscape hosts Namibia's oldest inhabitants and Twyfelfontein's 10,000-year-old rock engravings; while the desolate Skeleton Coast National Park, named for the countless skeletal shipwrecks scattered along its length, boasts jackals, hyenas, giraffes, ostriches, elephants and a huge seal colony.

For wildlife, though, Etosha National Park is the place. Like a refreshing drink after a trip across the desert, it's an area of dense bush and lush vegetation with elephants, lions, all sorts of antelope and is one of a few reserves with both black and white rhino. And, complementing the eccentricity of the landscape, Swakopmund's brightly coloured colonial buildings have been described as 'more German than Germany'.



THE OLIVE EXCLUSIVE

Windhoek

Cool, contemporary and stylish but with a warm heart and an oh-so-authentic African soul, the intimate, boutique Olive Exclusive is the first ultra-luxurious sanctuary of its kind in the Namibian capital.

From its professionally trained whiskey barmen, to carefully selected traditional artefacts from every corner of Namibia, you'll find all the bells and whistles you could possibly need. Each suite is individually decorated to reflect the country's variety of regions, complete with its own lounge area with fireplace and private dining room; while the elegant-yet-informal restaurant serves a seasonal menu with inventive signature dishes.

From £250 per person per night, breakfast



HOANIB SKELETON COAST CAMP

Skeleton Coast/Kaokoveld

In a remote area of the Kaokoveld, with its gravel-strewn plains and dry riverbeds, Hoanib Skeleton Coast Camp boasts eight large en-suite tents (including one family tent) and a pool, all looking out over the wide, rugged valley that slopes down to the almost-always dry Hoanib River. The research centre and game drives along the riverbed's narrow ribbon of vegetation provide insight to the surprising wealth of desert-adapted animals who call this place home. Plus, you've access to the unforgiving Skeleton Coast's shipwreck remains and the noisy colonies of Cape fur seals, by taking a fascinating drive or a weather-dependant scenic flight.

From £655 per person per night, all-inclusive



Hartmann's Valley

So remote, it takes a while to get there, but it's oh-so-special once you do. The drive from the airstrip is beautiful, as is the unexpected green 'oasis' by the river which is the gorgeous camp itself. Eight huge, super-luxurious thatch and canvas rooms are decked out in muted colours, but it's the scenery and activities which stay in the mind longest. Quad-biking on the dunes is terrific fun; ditto the late afternoon boat trip on the Kunene: the perfect way to see crocs basking on the banks while you enjoy a sundowner!

From £550 per person per night, all-inclusive

LITTLE ONGAVA

Etosha National Park

In so many instances, small is beautiful. And in the case of Little Ongava, that means small, posh and personal. This is safari on an intimate, exclusive scale; but even though there are just three exquisite suites, there's nothing small about them. Each feels like it's the size of a house, with high-beamed ceilings, free-standing tubs, dark wood floors; and it's all set off with gorgeous contemporary African décor and floor-to-ceiling windows to make the most of the unforgettable, utterly brilliant views too.

From £825 per person per night, all-inclusive



LITTLE KULALA

Namib Desert

What could be more romantic than lying back in your bed, gazing up at millions of stars and being surrounded by total tranquillity? We guarantee you've never seen sky so clear; and each of the thatch and canvas chalets here has a rooftop 'sky-bed' for perfect viewing (as well as private plunge pools). The décor is an unusual mix of neutral tones, white-washed floors and intriguing textures in stark contrast with the beautiful panoramas. With the mesmerising colours of the red dunes, extra-deep-blue sky and yellow wildflowers, it feels like another planet during the day too.

From £490 per person per night, all-inclusive



EDEN ADVENTURES

Namibia from the air is nothing short of awe-inspiring. The huge expanses of moving sand; the endless ocean stretching to the horizon; the big skies... they all remind you just how vast this country is. And exploring it by light aircraft lets you take in the very best of it all.

Days 1-2 – Kulala Wilderness Reserve

Flight Time: 1 hour, 50 minutes (from Windhoek)

As well as giving access to the Sossusvlei Dunes, Kulala Wilderness Reserve is a desert wildlife haven. Ostrich, springbok and gemsbok are common and there are frequent sightings of the bat-eared fox, Cape fox, cheetah and black-backed jackal. There are also several unique birds and you'll not only enjoy the spectacular scenery, but astonishing night skies too.

Stay: Little Kulala (2 nights)

Days 3-4 – Doro Nawas

Flight Time: 2 hours, 15 minutes

Leaving Kulala, you'll be treated to the amazing sight of the Namib Desert's dunes from the air before heading west to Meob Bay and an equally astonishing place – the Skeleton Coast. After flying along the Atlantic's edge, you'll travel inland for a two-night stay at either Damaraland Camp in the Torra Conservancy, or Desert Rhino Camp in the Palmwag Concession.

The Torra Conservancy's arid landscape has hills and valleys interspersed with dry riverbeds and wildlife here includes desert-adapted elephants, mountain zebras and southern giraffes, with occasional cheetahs and black rhinos. Birding here is excellent too. The larger Palmwag Concession meanwhile is a rocky landscape with flat-topped mountains, scrubby vegetation and isolated clumps of trees; home to some incredible desert-adapted wildlife like the black rhino, elephants, lions, hyenas and the odd cheetah; with bird life equally as varied.

Stay: Damaraland or Desert Rhino Camp (3 nights)

Days 5-6 – Ongava Game Reserve

Flight Time: 45 minutes

Fly to Ongava Game Reserve for a two-night stay at the camp of your choice, where you'll experience game drives into Etosha National Park, night drives, nature walks and hides on the private reserve. Ongava has large concentrations of wildlife: notably lions, cheetahs, springboks, gemsboks, wildebeests, zebras, giraffes, elands and black-faced impalas; as well as white and black rhinos. Bird life is prolific here too, with more than 340 species to be spotted.

Stay: Ongava Tented Camp or Lodge (2 nights)

Day 7 – Depart Ongava Game Reserve

Flight Time: 1 hour, 10 minutes (to Windhoek)

7 nights from £5795 per person





MOZAMBIQUE

An up-and-coming hotspot – from the sophisticated south to the final-frontier north – Mozambique is a mysterious, magical place of dreamy beaches, fabulous diving, off-beat safaris and spectacular island lodges.

A country of two halves, the south's good infrastructure comes from its proximity to South Africa and from the capital, Maputo, being there. Cross the Zambezi to the north though and it gets altogether more adventurous: one of Africa's final frontiers. Decades of conflict may have once made Mozambique inaccessible to Western travellers, but they didn't diminish its natural attractions. Now it's a rising star once more, and in spectacular fashion.

Maputo is almost as far south as you can go. It's a pretty energetic city, with Mediterranean-style architecture, vibrant markets and a lively atmosphere. Away from here, the southern half of the country boasts some of the world's best dive sites at Ponta de Ouro and the island idylls of the Bazaruto Archipelago, with dazzling white sands and coral reefs teeming with colourful fish.

Inland are the safari trails and bird-watching of Gorongosa National Park: once an African Eden; now being restored to its former glory as an important conservation project.

For true untouched paradise, though, head north. It starts at Ilha de Moçambique (Mozambique Island), the time-warped former capital joined to the mainland by causeway, where tiny reed houses rub shoulders with pastel-coloured colonial mansions. Up the coast is Pemba, a sunny seaside town with a beautiful beach, then beyond – at the country's northern tip – is the Quirimbas Archipelago. With its abundant marine life, paradise-perfect beaches and handful of spectacular island lodges, it's the perfect place to get away from it all.

IBO ISLAND LODGE

Quirimbas Archipelago

This is the sort of place you'd ideally never leave. A remote island community – one of Mozambique's oldest – bursting at the seams with colonial history, culture and local tradition. The lodge is elegant and luxurious, sure – with all sorts of activities – but it also offers a rare glimpse of the real Mozambique.

7 nights from £2350 per person, full board, including flights



MEDJUMBE PRIVATE ISLAND

Quirimbas Archipelago

Your own pristine island, just 1000 metres long and 500 metres wide; a jewel amidst the glittering blue of the Quirimbas with incredible diving – how cool is that? Actually, it's not quite all yours: there are 13 stylish, perfectly equipped beach chalets with plunge pools sharing the barefoot luxury. Rest assured though, the last thing it feels is crowded.

7 nights from £3650 per person, all-inclusive, including flights

VAMIZI ISLAND

MOZAMBIQUE



Quirimbas Archipelago

Picture-perfect castaway chic, this exclusive island resort is also a conservation project. For your ‘conservation fee’ you get one of 13 gorgeously romantic timber villas on a world-class beach and some of the world’s best diving. The reef teems with dolphins, turtles, sharks, rare dugongs and more – it’s a haven for birdlife, too.

7 nights from £5795 per person, all-inclusive, including flights

Working in partnership with the community, this eco-resort has 14 gorgeous villas in a garden setting, each with an infinity pool, and all just footsteps from the white beach. The huge staffed Presidential Villa is to-die-for, with a private beach and treehouse. A resident marine biologist and community guide will teach you more about the environment which you are in, the spa will aid relaxation and the cuisine, with its focus on local ingredients, will tantalise your tastebuds.

7 nights from £3850 per person, all-inclusive, including flights

AZURA RETREAT

Benguerra Island



andBEYOND BENGUERRA ISLAND

Benguerra Island

An exquisite piece of paradise in the middle of the Indian Ocean, firmly on the bucket list for anyone wanting a dreamy, tropical island escape (or a little R&R after a mainland safari), andBeyond Benguerra Island is a 13-room luxury beach holiday destination where time stands still and legends come to life.

Set on the second largest island in the sunny Bazaruto Archipelago, in a protected marine conservation area and surrounded by some of the world's best diving sites, it's a gateway to an underwater wonderland for divers; but just as heavenly if all you want to do is gaze out onto endless ocean views from postcard-perfect beaches, the rim-flow pool, or your cool, spacious beachfront casinha or cabana. Enjoy sundowners at the bar – a beautifully restored traditional dhow – or on a sunset cruise spotting dolphins, turtles, whales or the super-elusive dugong.

7 nights from £5695 per person, all-inclusive, including flights





The essence of Africa rolled into one country? Maybe. From dense mountain forests to acacia-studded savannah, colourful tribes to vibrant coral reefs and chalk-white beaches to some of the continent's best wildlife, this is a country that certainly packs it all in.

KENYA

Romantic. Peerless. This is Africa. More specifically, this is safari. It's where the whole idea of big game-hunting trips was invented well over 100 years ago.

While cameras have now thankfully replaced rifles, Kenya is as good as ever in terms of wildlife. Big game doesn't come any bigger than the annual Great Migration – when over two million wildebeest, gazelles, zebras and attendant predators cross into the fabled Maasai Mara in search of good grazing. But that's just one aspect of wildlife viewing here.

There are the picture-postcard views – like the definitive Kenyan wildlife shot of elephants against a backdrop of Mount Kilimanjaro. It's a top destination for birds too, especially the flamingo-fringed shores of Lake Nakuru and the sightings-rich Marine National Park on the Indian Ocean coast.

In fact, Kenya is a great choice for combining safari and sea, with heavenly tropical beaches and coral reefs both north and south of Mombasa: itself home to buzzing nightlife, a historical old town and the mighty Fort Jesus.

A well-developed tourist industry means many options for travellers, from classic safari camps to colonial country houses and from bush-cool to barefoot luxury. Add a human population as fascinating and varied as its animals (around 40 different ethnic groups) and it's no wonder Kenya is one of Africa's crown jewels.



GIRAFFE MANOR

Karen, Nairobi

This is definitely one for the bucket-list. Where else in the world can you stay in a manor house styled after a Scottish hunting lodge that's full of charm, history and original 1930s character? Feed alfalfa pellets to a herd of resident endangered Rothschild giraffes straight from your bedroom window? Share breakfast (and maybe a kiss!) with them through the dining room's huge picture windows before they head back through the verdant green gardens to their forest sanctuary? And be entertained by overexcited baby warthogs as the sun sets below the horizon? Needless to say, this is one of the world's most sought-after hotels, so booking as early as you possibly can is a must to avoid disappointment.

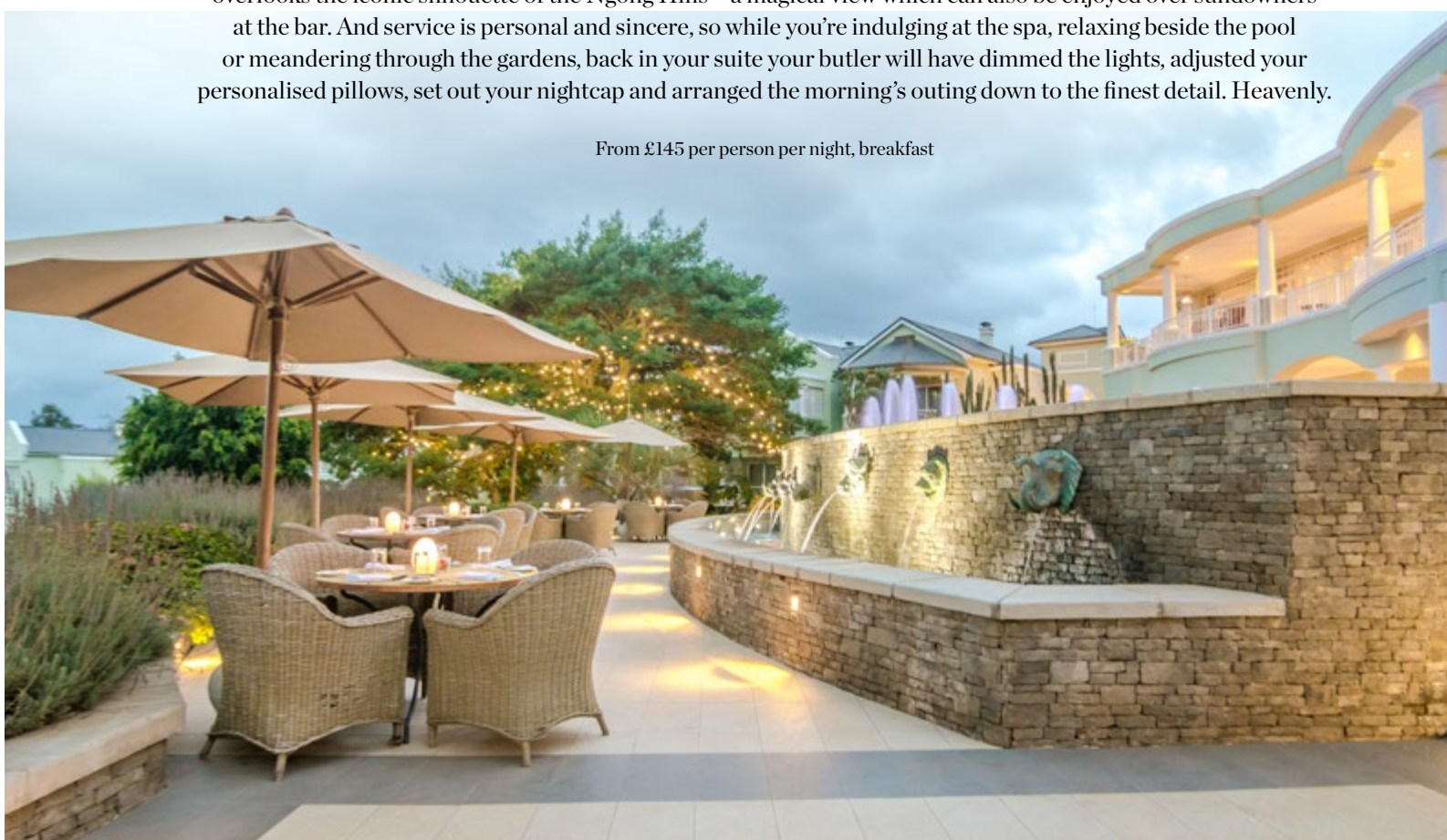
From £655 per person per night, all-inclusive

HEMINGWAYS NAIROBI

Karen, Nairobi

Beautiful in its symmetry and flooded with natural light, this 45-suite, plantation-style boutique hotel elevates the standard of luxury lodgings in Nairobi. Each of the 80-square-metre suites boasts a private balcony that overlooks the iconic silhouette of the Ngong Hills – a magical view which can also be enjoyed over sundowners at the bar. And service is personal and sincere, so while you're indulging at the spa, relaxing beside the pool or meandering through the gardens, back in your suite your butler will have dimmed the lights, adjusted your personalised pillows, set out your nightcap and arranged the morning's outing down to the finest detail. Heavenly.

From £145 per person per night, breakfast





COTTAR'S 1920s CAMP

Maasai Mara National Reserve

No-one does bygone luxury quite like Cottars. This unique camp is a mecca for lovers of old-fashioned opulence, where you're transported back to the fabulously genteel days of the 1920s, from the lantern-lit lounge warmed by a roaring fire, to dreamy white canvas tents adorned with muslin drapes and antique artworks, rugs and chaise longues. And whether you're meeting the wildlife on foot or by vintage car, indulging in a massage, or sipping a brandy to the strains of the gramophone, you'll find the original romance of safari right here.

From £395 per person per night, all-inclusive


ELEWANA TORTILIS CAMP

Amboseli National Park



Renowned for its large elephant population, Amboseli National Park has the best views of Kilimanjaro. Tortilis Camp is in an area of acacia woodland, with spacious tents and a thatched lounge, bar and dining areas... all very exquisite and all with those epic African vistas.

From £185 per person per night, full board

A woman with long dark hair, wearing a white tank top and light-colored pants, is sitting on a wooden daybed with orange cushions inside a large, light-colored canvas tent. She is holding a book and looking out towards a dense forest of green trees. The tent has a high ceiling and is supported by wooden poles. A small table next to her holds a white mug, a glass of water, and a small bottle. A white towel is draped over the side of the daybed. The floor of the tent is covered with a light-colored, textured rug. The overall atmosphere is peaceful and luxurious.

Tucked away on the banks of the Talek River, Naibor puts you in pole position to see the legendary Migration, close to all the major wildebeest crossing sites over the Mara River. The luxury tents combine contemporary style with gorgeous chunky furnishings; while the two stylish suite tents of Little Naibor are available privately.

From £380 per person per night, full board

NAIBOR

Maasai Mara National Reserve



ELEWANA ELSA'S KOPJE

Meru National Park

One of the most elegant lodges in Kenya in a spectacular setting, with eight open-fronted cottages, a honeymoon suite and a private house ideal for families. The beautifully appointed lodge incorporates the hillside's natural features: its open bar, lounge, dining room and infinity pool all making the most of the glorious views.

From £185 per person per night, full board

ARIJIJU

Laikipia

A home. A retreat. A sanctuary for adventure. Welcome to Arijiju: a beautiful, private dwelling in the game-rich, malaria-free Kenyan Highlands. Partly sculpted into the rock-bed, the subtle entrance opens into a fragrant, green space with generous Swahili curves and an air of monastic calm. Vaulted walkways lure you into cool shade and lead you towards the simply luxurious gym, spa and hammam, the dappled sun-traps and Lamu day-beds. Gourmet, unfussy yet visually gorgeous meals renew your sense of well-being. A slice of pool hangs over the untamed wild of the Sieku Valley in the Borana Conservancy. And adventure – from quad-bike safaris and horse-riding, to helicopter flips and those fabulous Big Five game drives – is everywhere.

From £1150 per person per night, all-inclusive (based on 6 people sharing)



ELEWANA LOISABA LODO SPRINGS

Laikipia

An ultra-private experience in the 57,000-acre Loisaba Conservancy with eight individual, spacious tented rooms boasting impressive views across the magical landscape. Like the views, the service is paramount with a dedicated

Elewana Guest Ambassador, safari vehicle and highly qualified Elewana field guide assigned to every room; the latter helping you seek out critically endangered large mammals like Grevy's zebra, wild dog, leopard and cheetah.

From £715 per person per night, full board



MAHALI MZURI

Maasai Mara National Reserve

Sir Richard Branson's 12-tented luxury safari camp in the private Olare Motorogi Conservancy serves up a front-row seat, not just to the annual Great Migration (you're right in the path of it here!), but also to the abundant game seen all year round – so just sit back and let the wildlife come to you! Super-stylish luxurious en-suite tents accommodating a maximum of 24 guests at any one time make for the perfect retreat when you're not out exploring and, if there's time, head-out on a local Maasai community tour or indulge in a rejuvenating spa treatment.

From £725 per person per night, all-inclusive





SEGERA RETREAT

Laikipia

In the heart of Laikipia: glorious Mount Kenya to the east; the Great Rift Valley to the west, Wilderness Safaris' Segera Retreat offers an exclusive safari experience unlike any other. Six timber-and-thatched villas (including a two-bedroom Family Villa – yes, this place is excellent for families too) are elevated above the beautifully designed, tropical botanical gardens; the recently restored Farmhouse Homestead, gracious Segera House and Villa Segera upping the privacy and luxury ante even further. Moving beyond your villa's sumptuous setting, all the usual safari outings and the array of unique dining escapades, you can spend the afternoon in the decked-out wellness retreat, enjoy a sedate stroll through those gardens, explore the Wine Tower's vast collection of vino, or take to the skies like Redford and Streep in the very same 1929 Gipsy Moth biplane used in Oscar-winning movie 'Out of Africa'.

From £1050 per person per night, all-inclusive



SASAAB

Samburu National Reserve

With commanding views towards Mount Kenya, Sasaab uses Moroccan principles in its design: each room is huge with enormous open-air bathrooms and massive beds with a light and airy feel. And, for extra cooling, each has its own plunge pool too.

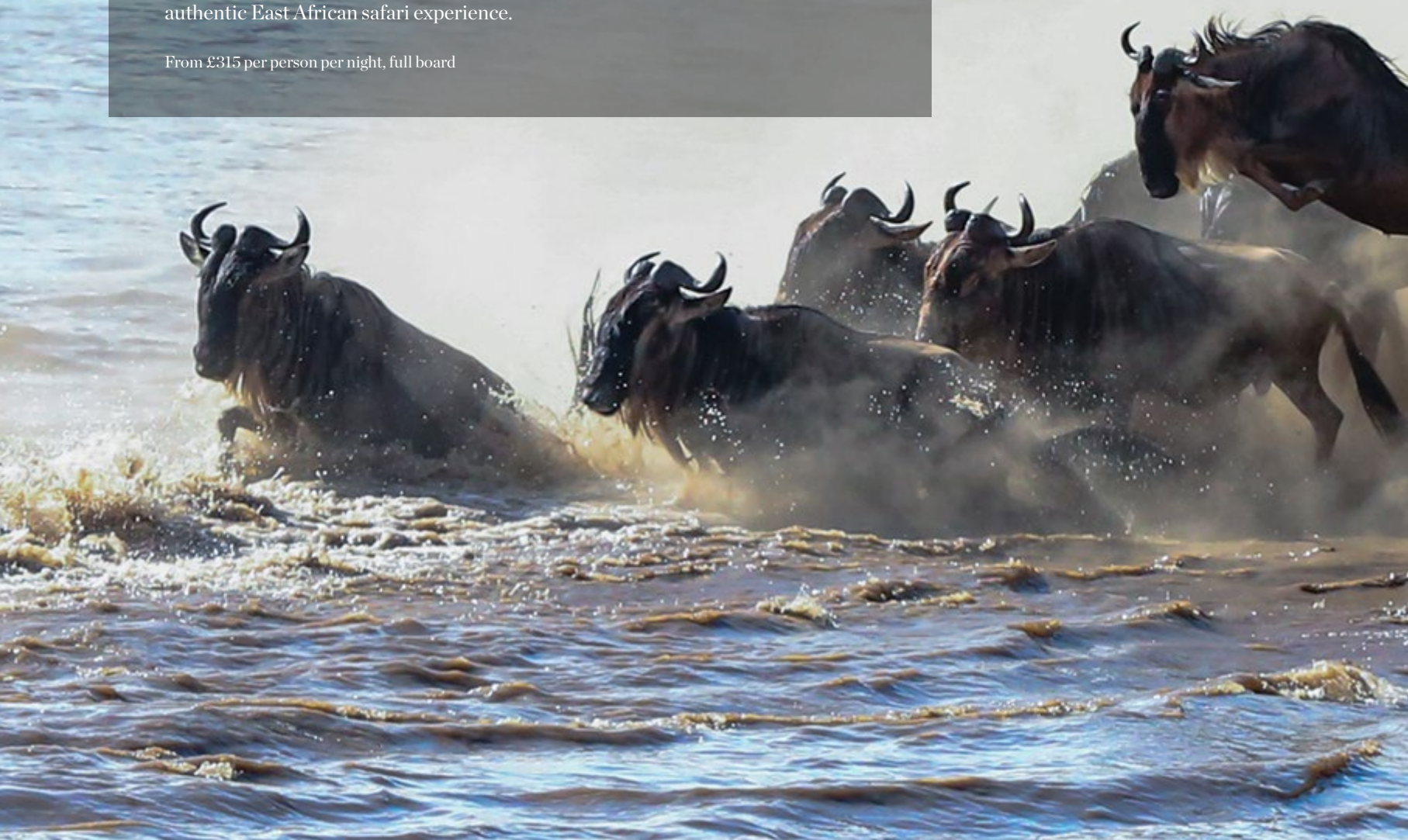
From £465 per person per night, all-inclusive

ELEPHANT BEDROOM CAMP

Samburu National Reserve

This small and comfortable camp with 12 tents on the banks of the Ewaso Nyiro, named after the huge herds of elephants that visit the camp, is perfect for an authentic East African safari experience.

From £315 per person per night, full board







ALFAJIRI VILLAS

Diani Beach

Wildly lavish, opulent and individual, Alfajiri is renowned as Kenya's most exclusive beach retreat. Famed for its service and cuisine (long, lazy meals are just one of the signature experiences here), the three completely unique villas – Cliff Villa, Garden Villa and Beach Villa – each offer unrivalled exclusivity, impressive private swimming pools, stunning beach views and a butler to tend to all your needs. It's great for families too, with childrens' meals and a nanny service all part of the package.

From £325 per person per night, all-inclusive
(based on 6 people sharing)



KINONDO KWETU

Diani Beach

Small and perfectly formed, Kinondo Kwetu sits on its own stretch of private, powder-soft white-sand beach. Being owner-run, the emphasis is on making you feel completely at home; with characterful rooms and cottages and plenty of quiet corners in which to while away the hours doing very little in this peaceful paradise. For those who do want to do something though, scuba-diving, watersports, tennis and horse-riding are all on offer here.

From £310 per person per night, full board



MANDA BAY

Lamu Archipelago

A gorgeous beachfront collection of 16 traditional coastal-style cottages, in-keeping with the local landscape, make up this boutique hotel. Each is spacious, comfortable and perfectly positioned to catch the cooling Indian Ocean breezes. Noted for its excellent cuisine, variety of watersports and deep-sea fishing, it's in an equally stunning location too; one of the many small, pristine islands of Lamu – a delicious slice of barefoot luxury.

From £220 per person per night, full board





EDEN ADVENTURES

KENYA | 7 NIGHTS

1 NIGHT *HEMINGWAYS* | NAIROBI

3 NIGHTS *ELEWANA LOISABA LODO SPRINGS* | LOISABA CONSERVANCY

3 NIGHTS *and BEYOND BATELEUR CAMP* | MAASAI MARA NATIONAL RESERVE

7 nights from £5795 per person



HIGHLIGHTS

1 An Elephantastic Experience. Nairobi is the world's only capital city set within a national park. And for elephant lovers, there's no better place to visit than the amazing David Sheldrick Wildlife Trust Elephant Orphanage – an institution that's been rescuing, caring for and rehabilitating baby elephants since the late 1970s. Open for one hour only every day from 11am to 12pm.

2 Counting Stars. Grab your camera and capture the vast open skies and dramatic landscapes of the exclusive Loisaba Conservancy. Set in the beautiful Rift Valley, the adventures here are a little more imaginative than most – like undisturbed game-viewing through this critical wildlife corridor (home to 260 bird species and prolific plains game) or sleeping under the stars on the lodge's exclusive star beds.

3 Crocodile Crossing. It's one thing watching wildebeest, gazelles, zebras et al walking across the plains in unimaginable numbers to find better grazing – but believe it or not, it gets better. To see so many animals cross the Mara River – which incidentally is infested with crocodiles – is truly a chance in a lifetime. It's like watching a David Attenborough programme for real.



TANZANIA

Serengeti, Kilimanjaro, Ngorongoro... if any country conjures up visions of Africa, it's Tanzania. From the pristine coral reefs of the Swahili Coast, to the slopes of the continent's highest mountain, it teems with wildlife – and promises to take your breath away.

This is a country with both Africa's highest and lowest points: Kilimanjaro and Lake Tanganyika. It has some of the continent's most impressive game parks and a coastline of pearly white beaches perfect for sun-worshipping. And to top it all, it's one of Africa's most stable nations, making its many treasures all the more accessible.

Those treasures don't come any greater than the vast plains and savannahs of the Serengeti: top of the tree when it comes to wildlife-watching. Running in a very close second is the Ngorongoro Crater – 'Africa's Eden' – a caldera packed with big game (apart from giraffes, who can't climb the steep sides) and many luxury lodges. Biggest of all though, is Selous Game Reserve in the south: it's larger than Switzerland. But while these may be the most popular spots for game-viewing, the more adventurous head for Ruaha and Katavi: both untouched, off the beaten track and pulsating with energy; or Mahale, renowned for its chimpanzees.

And then there's the coastline. Known as the Swahili Coast, its place on the ancient trading routes between India and the Middle East have given it a heady cocktail of cultural riches, while nature has bestowed immaculate coral reefs, throngs of coconut palms and silky soft beaches.

Wherever you head though, take the time to get to know the locals. Warm, friendly and unfailingly polite, their pride in telling you about their beautiful country may well turn out to be a high point of your trip... higher even than Kilimanjaro.

SINGITA

TANZANIA PORTFOLIO



SINGITA SABORA TENTED CAMP

Grumeti Serengeti

With a 1920s feel from its huge desks, antique travel chests, Persian rugs and silk curtains, everything in Singita Sabora's stunning tents is top-notch, with modern additions such as air-con. As well as game drives, activities include archery and star-gazing safaris.

From £1195 per person per night, all-inclusive



SINGITA FARU FARU LODGE

Grumeti Serengeti

This riverside lodge has great viewing year-round (not just during the Migration) and the style is a gorgeous mix of traditional African craftsmanship and Scandinavian simplicity. The eight open-style suites have thoughtful touches like huge picture windows and there's also a dedicated Family Suite and a two-bedroom Villa Suite.

From £1195 per person per night, all-inclusive



SINGITA

MARA RIVER TENTED CAMP



Lamai

This off-the-grid, boho-chic paradise serves up a front-row seat to the Great Migration's Mara River crossings and the year-round concentrations of resident plains game, big cats, elephant and enormous populations of crocodile and hippo. A constant, meaningful engagement with the wild is encouraged throughout your stay, allowing for complete relaxation and a real sense of peace. And though this remote, new generation permanent solar-powered eco-lodge – a modern take on the classic East African safari – may be a pared-down approach to the quintessential Singita experience (one that leaves behind a lighter footprint), it certainly doesn't compromise on any of their beloved creature comforts.

From £1195 per person per night, all-inclusive

SINGITA

SASAKWA LODGE



Grumeti Serengeti

Colonial heaven – with wood panelling, chandeliers and original art – pervades each of the nine luxury cottages and the four-bedroom private retreat at Singita's Sasakwa Lodge. Add manicured gardens, two tennis courts and stables and it feels more Edwardian manor than safari lodge. There's no more civilised way to enjoy the spectacular views of the Serengeti.

From £1225 per person per night, all-inclusive



SINGITA

SERENGETI HOUSE

Grumeti Serengeti

Breathtaking vistas of the Serengeti's endless, open plains. Private access to an untouched wilderness on the annual wildebeest Migration route. And itineraries, activities and meals all tailored to the beat of your own drum (early morning and late-afternoon game drives interspersed with guided walks, horse-back safaris, vigorous swims, poolside lounging, cookery lessons, tennis, in-house spa treatments and memorable outdoor feasts). Making it up as you go along is all part of the magic when you take up residence at the exclusive-use Singita Serengeti House – an outstanding contemporary retreat for up to eight friends or family members set on the slopes of Sasakwa Hill.

From £1180 per person per night, all-inclusive
(based on 4 people sharing)





SINGITA

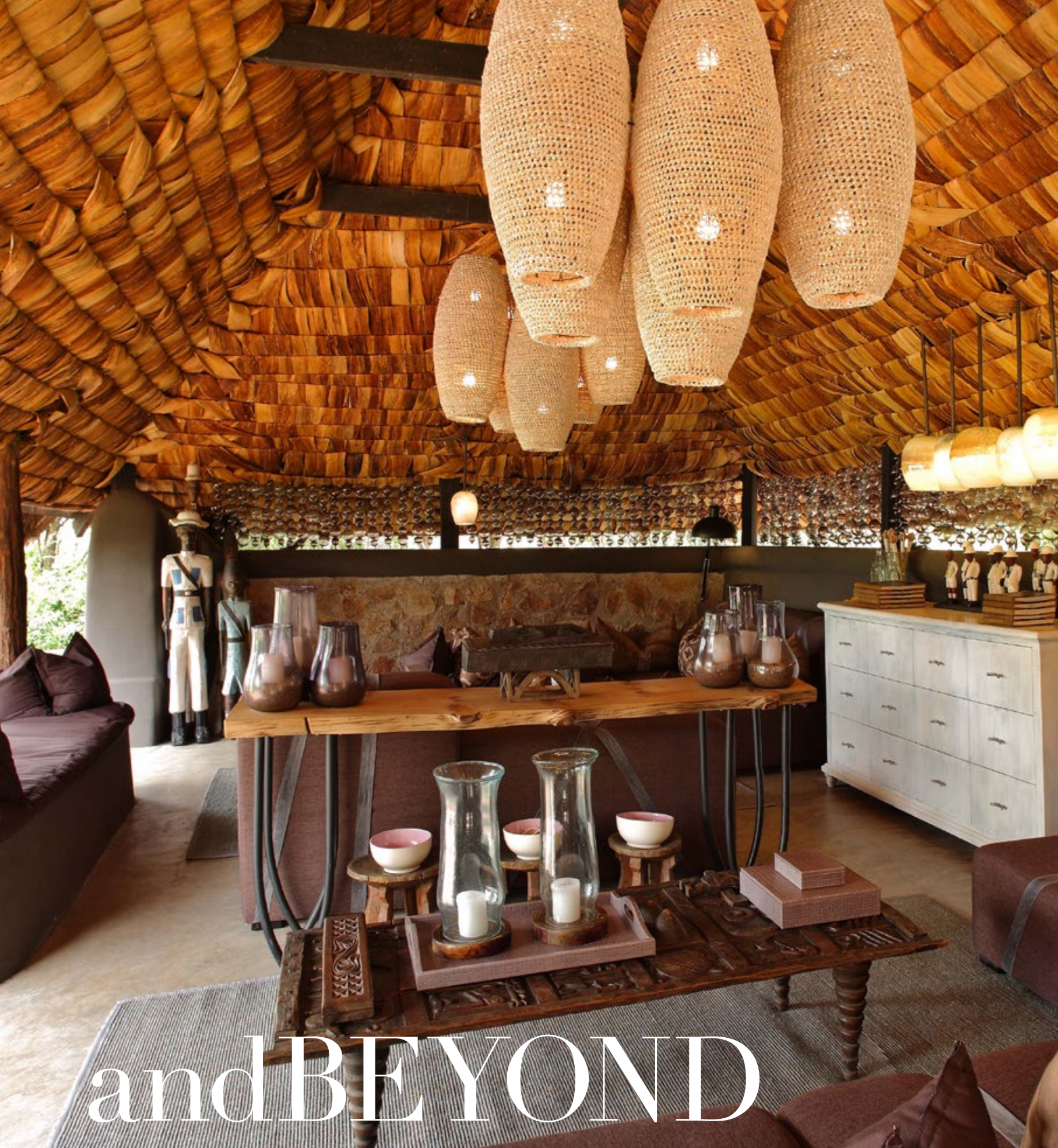
EXPLORE

Grumeti Serengeti

And now for something completely different. Capturing the very essence of safari in true ‘Out of Africa’ style, this exclusive mobile camp (no two parties are ever mixed) on the plains of the Serengeti has access to 340,000 acres of private land. With your every whim taken care of, it’s an experience unlike any other: camping without having to forfeit those magical creature comforts or attentive service intrinsic to your Singita stay.

With a private guide, chef, camp host and camp staff, activities can be arranged on a whim; game-drives may be as long or as short as you choose and intimate experiences await. It’s particularly appealing to those in search of an opportunity to connect up-close and personal with the earth and wildlife in a way they have never done before and one that’s really not to be missed.

From £1225 per person per night, all-inclusive



and BEYOND

GRUMETI SERENGETI TENTED CAMP

Grumeti River

Being surrounded by canvas gives a real sense of adventure (albeit with every luxury you need) and the colourful African fabrics and locally sculpted furnishings here give this camp a certain quirkiness. You're perfectly placed to watch the Migration cross the Grumeti River; and watch out for the resident hippos: they're particularly entertaining!

From £545 per person per night, all-inclusive



andBEYOND KLEIN'S CAMP

Grumeti River

With breathtaking valley views from the rustic thatch cottages, there's no better spot for watching the Migration. Klein's also has another advantage: being in a private concession, rangers can go off-road to get you closer to the animals. Alternatively, take a walking safari with a local spear-carrying Maasai.

From £545 per person per night, all-inclusive

BEHO BEHO

Selous Game Reserve

Built in the Selous' highlands to catch the breezes (so important this close to the Equator), Beho Beho is definitely one for safari aficionados. A refuge of stone-built, palm-thatched cottages with unbelievable vistas, where everything has been designed for total relaxation, all the while taking in the very best of the bush.

From £675 per person per night, full board

SIWANDU

Selous Game Reserve

In the heart of the Selous Game Reserve, on the shores of Lake Nzerakera, sits Siwandu, which splits into North, with its six spacious tents and South, with seven. Each is luxuriously appointed, but it's the wildlife that's the big attraction here – the waterside location means hippos, elephants and more are often spotted moving through camp.

From £525 per person per night, full board



NGORONGORO CRATER LODGE

This is pure fantasy. It's been likened to a Dali painting and hobbit huts, but the unbelievable richness and flamboyance of the surroundings – with wonderful fireplaces and huge bath-tubs – is almost as breathtaking as the views across the Ngorongoro Crater itself.

From £575 per person per night, all-inclusive



EDEN ADVENTURES

TANZANIA | 11 NIGHTS

1 NIGHT *ELEWANA ARUSHA COFFEE LODGE* | ARUSHA, TANZANIA

2 NIGHTS *ENTAMANU NGORONGORO* | NGORONGORO CRATER, TANZANIA

3 NIGHTS *SINGITA SABORA TENTED CAMP* | GRUMETI SERENGETI, TANZANIA

5 NIGHTS *THE RESIDENCE ZANZIBAR* | KIZIMKAZI, ZANZIBAR

From £7795 per person

HIGHLIGHTS



1 From Bean to Cup. Explore the world of coffee like never before on a walk around the workings of an Arusha coffee plantation to see how coffee is grown, harvested, dried and produced into the aromatic coffee that we drink every day

2 The Real Eden? It's not just animals that are the stars in Ngorongoro. The Olduvai Gorge in this part of the Great Rift Valley takes you way back into human history too – here, archaeologists unearthed a hominoid skeleton estimated to be 1.8 million years old. Older still, at 3.7 million years, was a series of hominoid footprints – making the area one of the oldest known sites of human habitation.

3 Make it to the Migration. It's been called 'the greatest wildlife show on Earth' – upwards of 1.5-million animals making their way across the Serengeti (and neighbouring Kenya's Maasai Mara) in search of fresh grazing. The sound of thundering hooves and clouds of red dust heralds the arrival of the planet's largest mass movement of land mammals – an unforgettable sight for those lucky enough to witness it.

4 Spice World. A trip to Tanzania is more than satisfying, but why not pay a visit to the stunning white-sand beaches and seductive shores of Zanzibar for a relaxing beach finale?

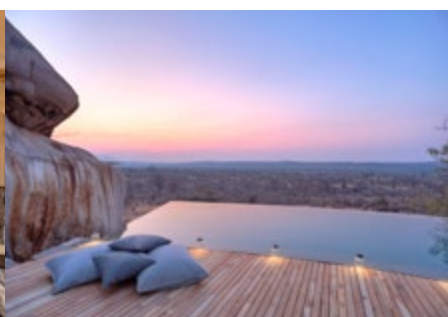
JABALI RIDGE

Ruaha National Park

Set high on a rocky kopje overlooking a landscape dotted with spiky palms and bulbous baobabs, Jabali Ridge is a sophisticated base for exploring Ruaha National Park's remarkable beauty, diverse flora and fauna and impressive big game. And with only a handful of visitors at any one time in an area the size of New Jersey, you simply can't beat the feeling of having the wilderness all to yourself. Just eight suites are hidden amongst the rocky boulders that cocoon the property and, in-between your expertly guided walking safaris, game- and night-drives, there's an infinity pool, spa and plenty of lounging space. The result? A truly exceptional Tanzanian safari experience.

From £525 per person per night, all-inclusive







ZANZIBAR

The Spice Islands feel like the crossroads of the world: a melting pot of far-flung cultures, centuries-old traditions and colour-saturated nature, where the thrill of discovery will absolutely overwhelm you and totally stir your imagination.

Zanzibar. Like Kathmandu or Shangri-La, the name itself conjures up a destination steeped in mystery and magical allure. It's certainly exotic – once one of the region's great trading centres, it welcomed travellers from Africa, India and Arabia over many centuries, each bringing a little of their own culture as well as things to sell. The main trades were slaves, ivory and locally grown spices: their rich fragrance leading to Zanzibar being known as The Spice Islands.

Zanzibar Town is actually the island's hub, with Stone Town at its heart: a labyrinth of winding alleys, bustling bazaars, mosques and grand Arab villas whose owners tried to outdo each other in extravagance. It's still pretty much as it was in the 19th century – its main sights including The Old Dispensary (now the Stone Town Cultural Centre), The Palace Museum displaying the wealth of the Sultans and the Arab Fort, built in the 1690s. Don't miss the early morning market for a real taste (or should that be scent?) of Zanzibar, with piles of hessian sacks overflowing with black pepper, nutmeg, cinnamon and more.

Stone Town might be the main attraction, but Zanzibar's other big draw is its virgin-white beaches: fringed by coral reefs and lapped by the warm, sapphire waters of the Indian Ocean. There are more than 25 altogether, some so peaceful that all you hear is the sea. Sounds paradise-perfect? It is.



andBEYOND MNEMBA ISLAND LODGE

Mnemba Island

Set on the north-eastern tip of Zanzibar, Mnemba is a romantic, stunningly beautiful private island resort. Ten Zanzibari bandas form the accommodation: rustic and simple yet luxurious, each has its own spacious veranda and private beach sala with sun-beds. As you would expect from an island surrounded by protected coral reefs, the diving here is fabulous and, as well as many species of tropical fish, guests can expect to see giant turtles and ghost crabs too; while other water-based activities include kayaking, wind-surfing, fly-fishing and swimming.

7 nights from £6895 per person, all-inclusive, including flights





THE RESIDENCE

Kizimkazi

In the south-west of the island, this resort's lovely one- and two-bedroom villas – each with a private deck, pool and bicycles for exploring the lush gardens – are the epitome of beachfront chic. What a beach, too – a mile of powdery white sand, flanked by coconut palms and the azure ocean.

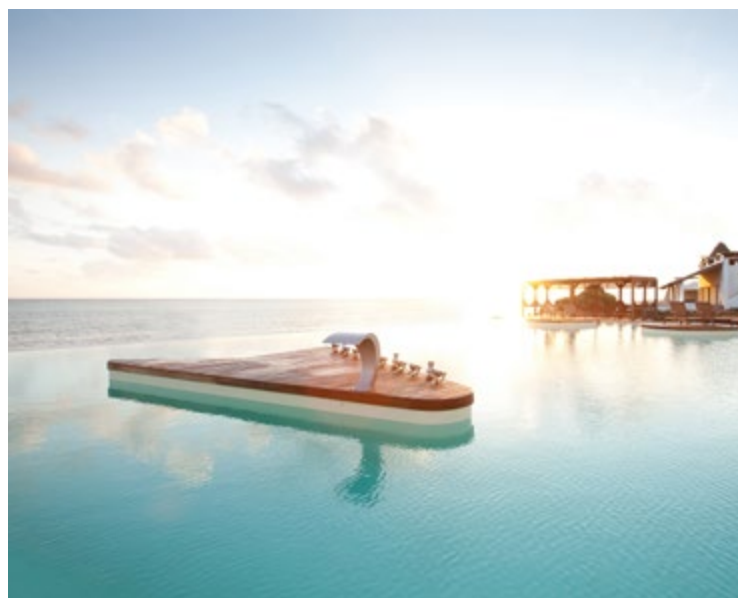
7 nights from £1495 per person, half board, including flights

ESSQUE ZALU ZANZIBAR

Nungwi

There's definitely a wow factor here – and it's not just the location. Set in a natural cove on the island's north-east, Essque's Zalu Zanzibar's collection of 40 sumptuous suites and nine fab villas mixes local materials and native artwork in a classic cocktail of cool. With three restaurants and a six-room spa too, it's perfect for just chilling... not to mention a great setting for a wedding.

7 nights from £1450 per person, half board, including flights



BREEZES, BARAZA & THE PALMS

Bwejuu Beach

One of the top island beaches in the world, Bwejuu is home to a privately owned collection of hotels. Baraza is a 30-villa boutique resort, beautifully styled and perfect for families; Breezes is ideal for romantic getaways, with lovely décor and an award-winning spa; while 'The Palms' six stunning villas create the ultimate private sanctuary.

7 nights from £1895 per person, all-inclusive, including flights





RWANDA

Rwanda is a lush, scenic landscape of majestic mountains: nowhere more so than the Virunga Volcanoes in the north-west, home to the world's last remaining mountain gorillas.

Even without gorillas, Rwanda is stunning. Lake Kivu, for example, has sublime inland beaches and perfect coves for discovery by canoe. The South-Western Parc National Nyungwe Forest is an epic rainforest (the largest in the region). And the people are welcoming and warm, belying the horrific events here in the 1990s.

But it's the mountains of the north-west, in the Parc National des Volcans, that remain the biggest attraction. The Virunga Volcanoes – some active, some dormant – reach 15,000 feet and are home to elephants, buffalo, duikers... and 300 mountain gorillas in the bamboo forest on the upper slopes. This is the perfect location from which to experience one of life's most unforgettable moments – tracking and observing the mesmerising gorillas in one of Africa's most beautiful, evocative settings. The near extinction of these gentle giants was first highlighted by zoologist Dian Fossey and the film *Gorillas in the Mist*. Since then, numbers have slowly increased; but seeing them is still a poignant, moving and rare privilege, with only 56 permits issued each day.

Don't just go ape though! Seeing the mountain gorillas is, for many, a dream come true. But why let the dream end there? A trip to Rwanda combines perfectly with a full-on Big Five safari in Kenya's astounding Maasai Mara. Or after all that mountain-trekking, perhaps you'd prefer a little chill-out time on the wonderful beaches of Zanzibar? You're simply spoilt for choice!

BISATE LODGE

BY
WILDERNESS SAFARIS





Kinigi

Set on the Albertine Rift, an extinct volcano located in a wildlife corridor that's crucial to the critically endangered mountain gorillas and next to Rwanda's renowned Volcanoes National Park, Bisate Lodge encompasses six upside-down, chestnut-shaped luxury thatched forest villas perched on stubby legs with floor-to-ceiling glass windows and private decks offering views of the lush, mountainous landscape.

This is the best spot in all of Rwanda for a holistic gorilla experience, with treks to seek out the equally rare golden monkey, a visit to Dian Fossey's grave and research centre and Rwandan coffee- and tea-tastings adding even more to this awe-inspiring experience.

From £945 per person per night, all-inclusive

SINGITA

KWITONDA LODGE



Volcanoes National Park

A contemplative, nurturing space from which to appreciate the transformative experience of coming face-to-face with the forest's gentle giants, Kwitonda Lodge sits on a prized 178-acre parcel of breathtaking meadows and wetlands at the edge of Volcanoes National Park. The eight suites and four-bedroom villa were designed with respect to, and in acknowledgment of their remarkable location, using traditional building techniques. Each boasts jaw-dropping views of the Sabyinyo, Gahinga and Muhabura volcanoes. And, with Tanzania's Serengeti just a short hop across Lake Victoria, it's an ideal opportunity for a Singita experience that combines gorillas with the Grumeti Reserve.

From £1195 per person per night, all-inclusive

SINGITA

KATAZA HOUSE

Volcanoes National Park

Set right on the edge of Volcanoes National Park, the exclusive-use, four-bedroom Singita Kataza House (built with sustainability very much in mind, using thoughtfully sourced local materials wherever possible) puts gorilla-trekking experiences within easy reach. Less than 10 minutes from the park's HQ, oversized windows found all over the property perfectly highlight the dramatic landscapes; while the open living and dining spaces, wine cellar, fitness centre, cinema, massage room, two heated plunge pools, interactive kitchen, fire-pit, full complement of staff and farm-to-table food ensures families and friends can all comfortably appreciate the transformative, once-in-a-lifetime experience of meeting 'the gentle giants of the forest' together in a truly unique slice of Africa.

From £1325 per person per night, all-inclusive



ONE & ONLY

NYUNGWE HOUSE

Gisakura, Nyamasheke Nyungwe Forest Reserve

Surrounded by ancient rainforest, nestled among mountains and set within the lush green expanse of a working tea plantation, One&Only Nyungwe House is a haven of creature comforts where nature's wild secrets come to life right before your eyes. It's simply perfect for an exclusive window into Rwanda's fascinating wildlife and culture. Soak up incredible tailored moments from bird-watching and wild chimpanzee tracking to secluded, indigenous open-air spa treatments, tea demonstrations and spear-throwing. And you'll never have the same dining experience twice – think tempting nibbles around the bonfire, sociable grand feasts amongst the flora and fauna and private dinners in the tea plantation.

From £695 per person per night, all-inclusive





ONE & ONLY

GORILLA'S NEST

Kinigi

Cushioned in the foothills of the breathtaking Virunga volcano range, One&Only Gorilla's Nest is the closest resort to Volcanoes National Park and the region's ultimate luxury retreat thanks to its wealth of jungle experiences, sparkling eucalyptus-enveloped pool, delicious seasonal menus with a side of floral vistas and blissful wellness treatments infused with African botanicals. Feel the thrill of up-close encounters with the rare, free-roaming majestic mountain gorillas. Unearth the wonders of Volcanoes National Park, traversing magical landscapes, spotting wildlife and scaling epic volcanoes. Or feed your curiosity with local coffee-tastings, star-gazing and traditional local performances. It's all possible with One&Only's expertly curated signature experiences, two of which are included daily for your enjoyment.

From £1295 per person per night, all-inclusive

OLSEN ANIMAL TRUST

*OUR PARTNER, OLSEN ANIMAL TRUST (OAT),
SUPPORTS NUMEROUS ORGANISATIONS IN
THE WORLD OF WILDLIFE, CONSERVATION
AND ANIMAL WELFARE.*





Over the past year, there have been many exciting developments across the projects in Africa that our charity partner, Olsen Animal Trust, supports. Amongst other projects in 2019, their continued efforts on the rescue and rehabilitation of wild animals helped to facilitate the construction of a new Rehab Centre at South Africa's Shamwari Game Reserve. This centre allows the highly passionate and skilled vet team to rescue and care for injured and orphaned wildlife until such time that they are ready to be re-released back into the reserve. The opening of this state-of-the-art centre coincides with a major upgrade to the luxury lodges, so it's the perfect time to visit!

Upgrades to the Shamwari Big Cat Sanctuary have also been completed in preparation for the relocation of the 'Lions of Lyon' cubs and a pair of mature lionesses who were recently rescued by the Born Free Foundation in France.

The Elephant Orphanage Project, meanwhile, continues to successfully rehabilitate orphaned elephants in Zambia, with the older of the orphans spending more and more time in the bush and interacting with wild herds, which is hugely promising for them.

And in other good news, Coco the adult chimp is now enjoying life in his new natural enclosure at the Chimpanzee Conservation Centre in Guinea.

These are just some of the amazing initiatives and projects that OAT support across the globe. To find out more, please visit www.olsenanimaltrust.org and, if you would like to help in any way, please contact Sue at sue@olsenanimaltrust.org.





*FLY HIGH WITH BRITISH AIRWAYS
ON YOUR NEXT HOLIDAY WITH
EDEN LUXURY TRAVEL...*

Start your holiday as you intend to continue: kicking back and relaxing on-board with British Airways. With an ever-expanding route network, new airline partnerships and access to almost 600 destinations the world over, there's every kind of check-in service you could hope for – online, on your mobile with a whizzy smartphone boarding pass, or self-service at the airport, plus an excellent choice of travel classes. And that's not all. Enjoy an advanced audio-visual entertainment system of TV, films and audio; over 60 dedicated British Airways lounges and 90 partner lounges across the world and delicious in-flight cuisine created by leading chefs, plus fun, healthy children's menus.

It's no wonder we recommend British Airways on many of our routes.

BOOKING CONDITIONS

1. YOUR HOLIDAY CONTRACT

The holidays featured are operated by The Eden Collection Ltd ('the Company' /'we' /'us' /'our') which is registered in England under Company number 6664069. Your contract is with the Company and the following booking conditions, together with the information set out in 'Essential Reading' and the relevant brochure descriptions, will form the basis of your contract with the Company. We both agree that English law (and no other) will apply to your contract and to any dispute, claim or other matter of any description ('claim') which arises between us. We both also agree that any such claim (and whether or not involving any personal injury) must be dealt with by the Courts of England and Wales only unless, in the case of Court proceedings, you live in Scotland or Northern Ireland. In this case, proceedings must either be brought in the Courts of your home country or those of England and Wales. If proceedings are brought in Scotland or Northern Ireland, you may choose to have your contract and claim governed by the law of Scotland/Northern Ireland as applicable (but if you do not so choose, English law will apply). In these booking conditions, 'you' and 'your' means all persons named on the booking, or any of them as applicable (including anyone who is added or substituted at a later date). Except where otherwise stated, these booking conditions only apply to holiday arrangements which you book with us in the UK and which we agree to make, provide or perform (as applicable) as part of our contract with you. All references to 'booking', 'contract', 'holiday' or 'arrangements' mean such arrangements unless otherwise stated, 'accommodation' means the hotel, apartment or chalet which you have booked as part of your holiday and 'departure' means the start date of the arrangements you have booked with us.

2. YOUR FINANCIAL PROTECTION

For flights and flight inclusive arrangements, we provide security for the monies that you pay us and for your repatriation in the event of our insolvency by way of an ATOL number (9902) administered by the Civil Aviation Authority (CAA). When you buy an ATOL-protected air holiday package and/or flights from us, you will receive a confirmation invoice from us (or via our authorised travel agent) confirming your arrangements and your protection under the Company's ATOL*. In the unlikely event of our insolvency, the CAA will ensure that you are not stranded abroad and will arrange to refund any money you have paid to us for an advance booking. For further information, visit the ATOL website at www.atol.org.uk. Not all holiday or travel services offered by us are protected by the ATOL scheme, all non-air inclusive holiday packages* are protected by ABTA (Y6116). ABTA will financially protect your arrangements in the same way except that, if you are already abroad, you will be returned to the point where your contracted arrangements with us were due to finish. Please go to www.abta.com for a copy of the guide to ABTA's scheme of financial protection. The company does not provide financial protection for accommodation-only bookings.

*The air inclusive holidays we arrange are ATOL protected providing either the person who pays for the booking is present in the UK when the booking is made or the first leg of any flight or flights we arrange for you commences in the UK. Please note – some of the clauses in these booking conditions only apply to arrangements which constitute a 'package'. A package is a combination of at least two out of accommodation, transport and other tourist services, where bought from us at the same time, at an inclusive price. Therefore, these clauses will not apply to any 'accommodation only' (including villas) bookings. The clauses which only apply to packages are clearly identified below.

3. BOOKING

On making an enquiry with us or one of our authorised travel agents regarding a holiday booking, we will issue you with a quote. To secure your booking (subject to availability), you should telephone us or your authorised travel agent to confirm your booking and pay the relevant deposit as detailed in clause 4. All correspondence will be sent to the client at the address specified or, where you book through one of our authorised travel agents, to the agent. The person who makes the booking ('party leader') guarantees that he/she has the authority to accept and does accept on behalf of all members of your party, the terms of these booking conditions. The party leader accepts

responsibility for paying for all persons named on the booking and for keeping them advised of the booking details and all information we send to you. A contract will exist between us as soon as we issue our confirmation invoice. Please check the contents of the invoice and all other items we send you carefully and, in the event of a discrepancy or error, contact us immediately as it may not be possible to make changes later. We regret we cannot accept any liability if we are not notified of any inaccuracy in any document within 14 days of our sending it out (5 days for tickets). We will do our best to rectify any mistake notified to us outside these time limits but you must meet any costs involved in doing so. The only exception to this requirement to meet costs is where the mistake in question was made by us and there is good reason why you did not tell us about it within these time limits.

4. PAYMENT/DEPOSIT

A minimum deposit of 10%, with a minimum of £250* per person of the total holiday cost must be paid at the time you confirm your booking. For villa and chalet bookings, a deposit of 30% of the total holiday cost is required. The amount of your deposit will be notified to you when we issue you with a quote. Approximately 12 weeks before the date your arrangements are due to commence, we will send you a final invoice. Where applicable, this invoice will show any surcharge which has become payable – see clause 6 'The Price You Pay'. The price of your holiday as shown on your final invoice will not increase. Usually, the balance of the cost of your arrangements must be received by us not less than 10 weeks before the date your arrangements are due to commence. If the booking is made within 10 weeks (or after the balance due date if earlier) of the date your arrangements are due to commence, the full cost of the holiday must be paid at the time of the booking. For some holidays or elements of holidays, full payment must be received earlier than 10 weeks in advance. We will advise you at the time of booking where this is the case. In the event that the balance is not paid by the due date, we have the right to treat your holiday as cancelled by you and you will forfeit all payments made or due at that date. Alteration or cancellation by a client of an accepted booking will be subject to the provisions of these booking conditions.

*Please note that higher deposits may be requested if prepayments to suppliers are necessary. All payments made at the time of booking are non-refundable except where otherwise specifically stated in these booking conditions.

NB: A selection of our airline fares require full payment at the time of booking and also carry 100% cancellation charges. If this is the case, we will advise you at the time of booking. We reserve the right to pass on 1.5% credit card charges for all holiday balance payments.

Except for flight inclusive bookings, all monies you pay to an authorised travel agent for your booking with us will be held by the agent on your behalf until we issue our confirmation invoice. After that point, the agent will hold the monies on our behalf until they are paid to us. For flight inclusive bookings all monies you pay to an authorised travel agent for your booking with us will be held by the travel agent on our behalf until they are paid to us or refunded to you.

5. SPECIAL REQUESTS AND DISABILITIES / MEDICAL PROBLEMS

If you have any special request, you must advise us in writing at the time of booking. Although we will endeavour to pass any reasonable requests on to the relevant supplier, we regret we cannot guarantee any request will be met unless we have specifically confirmed this. For your own protection, you should obtain confirmation in writing from us that your request will be complied with (where it is possible for us to give this) if your request is important to you. Confirmation that a special request has been noted or passed on to the supplier or the inclusion of the special request on your confirmation invoice or any other documentation is not confirmation that the request will be met. Unless and until specifically confirmed, all special requests are subject to availability. We regret we cannot accept any conditional bookings, i.e. any booking which is specified to be conditional on the fulfilment of a particular request. All such bookings will be treated as 'standard' bookings subject to the above provisions on special requests. If you have any medical problem or disability which may affect your arrangements or

any special requirements as a result of any medical condition or disability (including any which affect the booking process), please tell us before you confirm your booking so that we can assist you in considering the suitability of your chosen arrangements and/or making the booking. In any event, you must give us full details in writing at the time of booking and whenever any change in the condition or disability occurs. You must also promptly advise us if any medical problem or disability develops after your booking has been confirmed which may affect your arrangements.

6. THE PRICE YOU PAY

Our price promise is based on a like-for-like quote at the same time of booking compared to suppliers' published/rack rates. The prices shown in this brochure were calculated on the basis of then known costs and exchange rates. We reserve the right to alter and correct errors in the prices of any of the holidays shown in this brochure. You will be advised of the current price of the holiday that you wish to book, at the time of booking. Once the price of your chosen holiday has been confirmed at the time of booking, then subject to the correction of errors, we will only increase or decrease the price in the following circumstances. A surcharge or refund (as applicable) will be payable, subject to the conditions set out in this clause, in the event of any change in our transportation costs or in dues, taxes or fees payable for services such as landing taxes or embarkation or disembarkation fees at ports or airports. We will not however surcharge for variations in exchange rates. Even in the above cases, only if the amount of any increase in our costs exceeds 5% of the total cost of your holiday (excluding any amendment charges) will we levy a surcharge. If any surcharge is greater than 10% of the cost of your holiday (excluding any amendment charges), you will be entitled to cancel your booking and receive a full refund of all monies you have paid to us (except for any amendment charges) or alternatively purchase another holiday from us as referred to in clause 11 'Cancellation or Changes Made by the Company'. Where applicable, you have 14 days from the issue date printed on the surcharge invoice to tell us if you want to choose option (b) or (c) as set out in clause 11 below. If you do not tell us that you wish to choose either of these options within this period of time, we are entitled to assume that you do not wish to do so and will pay the surcharge. Any surcharge must be paid with the balance of the cost of your arrangements. Please note that arrangements are not always purchased in local currency and some apparent changes have no impact on the price of your holiday due to contractual and other protection in place. A refund will only be payable if the decrease in our costs exceeds 5% of the total cost of your holiday as set out above. Where a refund is due, we will pay you the full amount of the decrease in our costs. We promise not to levy a surcharge after we send you our final invoice approximately 12 weeks prior to departure. No refund will be payable if any decrease in our costs occurs during this period either.

7. IF YOU CHANGE YOUR BOOKING

If, after your confirmation invoice has been issued, you wish to change your travel arrangements in any way, we will do our utmost to make these changes, however, please note that it may not always be possible. Any request for changes to be made must be in writing from the person who made the booking. You will be required to pay an administration charge of £45 per booking, plus any further costs we incur or our suppliers incur or impose in making this alteration. You should be aware that these costs could increase the closer to the departure date that changes are made and you should contact us as soon as possible. NB: Certain travel arrangements, like many flight bookings for example, cannot be changed after a reservation has been made and, therefore, any alteration requests could incur a cancellation charge of up to 100% of that part of the arrangements, plus any additional charges for replacement services.

8. INABILITY TO TRAVEL

(This clause applies to packages only)

If any booked person is prevented from travelling on the holiday you booked due to genuine circumstances (such as your own personal injury or illness or the death or serious illness of a close relative), the Company will agree to that person's booking being transferred to another suitable person (introduced by you) provided they meet all the requirements relating to that holiday and, that the holiday arrangements

remain the same apart from the name change. You must provide proof of why you are unable to travel, at the time you request to transfer your booking. The Company must be given reasonable notice of the transfer request and in any event, the booking cannot be transferred within 14 days of the date of departure. If the transfer can be made then an administration charge of £45 per booking together with all costs and charges levied or incurred by the suppliers must be paid before the transfer will be effected. For flight inclusive arrangements, you must pay the charges levied by the airline concerned. As most airlines do not permit name changes after tickets have been issued for any reason, these charges are likely to be the full cost of the original flight in addition to the cost of the new flight. Bookings may not be transferred to another person in any other circumstance. In the event of you transferring your booking to another person, you are jointly and severally liable for payment of the holiday cost and other associated expenses. The person to whom the booking is transferred must agree to be bound by these booking conditions.

9. CANCELLATIONS

You are required to pay the balance of your holiday by the due date, as shown on your invoice. If you do not, then the Company reserves the right to cancel the booking and retain your deposit. You may cancel your holiday arrangements, or any part of them, at any time. To make a cancellation, the party leader must write to the Company as soon as possible with full details. Since we incur costs in cancelling your holiday arrangements, you will have to pay the applicable cancellation charges as detailed below. Upon receipt of the written cancellation at our offices, the following charges will be levied depending on the number of days prior to departure:

Period before departure we receive written notification	Cancellation Fee
Before balance due date	Loss of deposit
Balance due date – 45 days	30% of balance plus loss of deposit
44-20 days	75% of balance plus loss of deposit
19-0 days	100% of balance plus loss of deposit
Day of departure or after	100% of total holiday cost

Where any cancellation affects the basis on which the cost of your holiday was calculated (for example, where as a result only one person will occupy a double/twin room), we will recalculate the cost and re-invoice you accordingly.

The above cancellation charges may vary to reflect the terms and conditions of the Company’s suppliers and some bookings are subject to 100% cancellation charges if cancelled at any time. You will be advised at the time of booking if the conditions vary and if higher cancellation charges apply.

NB: We strongly recommend that you have adequate TRAVEL INSURANCE including cancellation cover. If the reason for your cancellation is covered under the terms of your insurance policy, you may be able to reclaim these charges (less any applicable excess) from the insurance company.

10. ALTERATION TO A CONFIRMED BOOKING AFTER TRAVEL HAS COMMENCED

We regret that no credit or refund is possible for any unused services included in the cost of your holiday. If you decide to alter your travel arrangements whilst abroad this is your own responsibility and the Company is not responsible for any extras or difficulties that may arise with onward travel as a result of such alterations. No credit or refund is possible for any lost, mislaid, stolen or destroyed documents.

11.CANCELLATION OR CHANGES MADE BY THE COMPANY

Occasionally, we may have to make changes to your holiday arrangements and we reserve the right to do so at any time. Most of these changes will be minor and we will advise you of them at the earliest possible date. We also reserve the right in any circumstances to cancel your travel arrangements. We will not cancel your travel arrangements less than 8 weeks before your departure date, except for reasons of ‘force majeure’ (see clause 12) or failure by you to pay the final balance.

NB: Carriers, such as airlines, referred to in the brochure may be subject to change. Such a change is deemed to be a minor change. Other examples of minor changes include alteration of your outward/return flights by less than 12 hours, change to different accommodation of the same standard and changes to aircraft type (where advised).

If we have to make a significant change before the date your arrangements are due to commence we will inform you or your travel agent as soon as reasonably practical. Significant changes are changes to your confirmed arrangements such as a change of UK airport to one which is more inconvenient to you (except as between Heathrow, Gatwick and Stansted), a change of resort or accommodation to a lower category/standard or an alteration to the outward or return time of your international flight (where arranged by us) by more than 12 hours. If there is time to do so we will offer you the choice of:

- a) accepting the changed arrangements, or
- b) purchasing other arrangements from us, or
- c) cancelling your arrangements and receiving a full refund of all monies you have paid to us

Please note, the above options are not available where any change made is a minor one.

If we have to make a significant change or cancel less than 8 weeks before the date your arrangements are due to commence we will pay you the compensation payments set out in the table below depending on the circumstances and when the significant change or cancellation is notified to you subject to the following exceptions. Compensation will not be payable and no liability beyond offering the above-mentioned choices can be accepted where we are forced to make a change or cancel as a result of unusual and unforeseeable circumstances beyond our control, the consequences of which we could not have avoided even with all due care. No compensation will be payable and the above options will not be available if we cancel as a result of your failure to comply with any requirement of these booking conditions entitling us to cancel (such as paying on time) or if the change made is a minor one.

Period before departure a significant change or cancellation is notified to you or your travel agent	Compensation per person
56-35 days	£50 per person
34-15 days	£75 per person
14-0 days	£100 per person

Very rarely, we may be forced by ‘force majeure’ (see clause 12) to change or terminate your arrangements after they have commenced but before their scheduled end. This is extremely unlikely but if this situation does occur, we will try to obtain refunds for any unused services from our suppliers. If we are successful we will pass these on to you after deducting our own costs in obtaining them. If we are not successful we regret we cannot give you any refund as this situation is totally outside our control. We cannot pay you any compensation or be responsible for any costs or expenses incurred by you as a result. In accordance with EU Regulation 2111/2005 we are required to bring to your attention the existence of a ‘Community List’ of airlines which are subject to an operating ban in the EU and to advise you of the actual carrier operating your flight/connecting flight/transfer or, if not known, the likely carrier. We do this by listing the carriers to be used or likely to be used in the Airline Information pages and, where known, advising you of the operating airline at the time of booking. Any changes to the actual airline after you have received your tickets will be notified to you as soon as possible and in all cases at check-in or at the boarding gate. Such a change is deemed to be a minor change. The Community List of banned carriers is available for inspection at http://ec.europa.eu/transport/air-ban/list_en.htm If the carrier with whom you have a confirmed reservation becomes subject to an operating ban as above as a result of which we/the carrier are unable to offer you a suitable alternative, the above provisions of this clause 11 where a significant change is made will apply.

12. FORCE MAJEURE

Except where otherwise expressly stated in these booking conditions, we regret we cannot accept liability or pay any compensation where the performance or prompt performance

of our contractual obligations is prevented or affected by, or you otherwise suffer any damage, loss or expense of any nature as a result of, ‘force majeure’. Circumstances amounting to ‘force majeure’ include any event that we or the supplier of the services in question could not, even with all due care, foresee or avoid such as (whether actual or threatened) war, civil strife, riot, terrorist activity, industrial dispute, natural or nuclear disaster, fire, sickness, weather conditions, the acts of any government or public authority and all similar events which are beyond our control. Please note that we are reliant on information provided by the Foreign Office.

13. RESPONSIBILITIES OF THE COMPANY

(Clause 13(1) applies to packages only)

(1) We promise to make sure that the arrangements we have agreed to make, perform or provide as applicable as part of our contract with you are made, performed or provided with reasonable skill and care. This means that, subject to these booking conditions, we will accept responsibility if, for example, you suffer death or personal injury or your contracted arrangements are not provided as promised or prove deficient as a result of the failure of ourselves, our employees, agents or suppliers to use reasonable skill and care in making, performing or providing, as applicable, your contracted arrangements. Please note it is your responsibility to show that reasonable skill and care has not been used if you wish to make a claim against us. In addition, we will only be responsible for what our employees, agents and suppliers do or do not do if they were at the time acting within the course of their employment (for employees) or carrying out work we had asked them to do (for agents and suppliers).

(2) We will not be responsible for any injury, illness, death, loss (including loss of possessions and loss of enjoyment), damage, expense, cost or other sum or claim of any description whatsoever which results from any of the following:

- the act(s) and/or omission(s) of the person(s) affected or any member(s) of their party or
- the act(s) and/or omission(s) of a third party not connected with the provision of your arrangements and which were unforeseeable or unavoidable or
- ‘force majeure’ as defined in clause 12 above

(3) Please note, we cannot accept responsibility for any services which do not form part of our contract. This includes, for example, any additional services or facilities which your accommodation or any other supplier agrees to provide for you where the services or facilities are not advertised in our brochure/on our website and we have not agreed to arrange them as part of our contract and any excursion you purchase during your holiday. Please also see clause 17 ‘Excursions and Activities.’ In addition, regardless of any wording used by us on our website, in any of our brochures or elsewhere, we only promise to use reasonable skill and care as set out above and we do not have any greater or different liability to you.

(4) The promises we make to you about the services we have agreed to provide or arrange as part of our contract – and the laws and regulations of the country in which your claim or complaint occurred – will be used as the basis for deciding whether the services in question had been properly provided. If the particular services which gave rise to the claim or complaint complied with local laws and regulations applicable to those services at the time, the services will be treated as having been properly provided. This will be the case even if the services did not comply with the laws and regulations of the UK which would have applied had those services been provided in the UK. The exception to this is where the claim or complaint concerns the absence of a safety feature which might lead a reasonable holiday maker to refuse to take the arrangements in question.

(5) For all claims which do not involve death or personal injury or luggage or personal possessions, if we are found liable to you on any basis, the maximum amount we will have to pay you is twice the price (excluding amendment charges) paid by or on behalf of the person(s) affected in total unless a lower limitation applies to your claim under clause 13(6) below or elsewhere in these booking conditions. This maximum amount will only be payable where everything has gone wrong and you have not received any benefit at all from your arrangements.

Where we are found liable for loss of and/or damage to any luggage or personal possessions (including money), the maximum we will have to pay you is £1000 per person affected unless a lower limitation applies to your claim under this clause or clause 13(6) below. You must ensure you have appropriate travel insurance to protect your belongings.

(6) Where any claim or part of a claim (including those involving death or personal injury) concerns or is based on any travel arrangements (including the process of getting on and/or off the transport concerned) provided by any air, sea or rail carrier to which any international convention or regulation applies, the maximum amount of compensation we will have to pay you will be limited. The most we will have to pay you for that claim or that part of a claim if we are found liable to you on any basis is the most the carrier concerned would have to pay under the international convention or regulation which applies to the travel arrangements in question (for example, the Warsaw Convention as amended or unamended and the Montreal Convention 1999 for international travel by air and/or for airlines with an operating licence granted by an EU country, the EU Regulation on Air Carrier Liability for national and international travel by air, the Athens Convention for international travel by sea or COTIF, the Convention on International Travel by Rail).

Please note: Where a carrier would not be obliged to make any payment to you under the applicable international convention or regulation in respect of a claim or part of a claim, we similarly are not obliged to make a payment to you for that claim or part of the claim. When making any payment, we are entitled to deduct any money which you have received or are entitled to receive from the carrier for the claim in question. Copies of the applicable International Conventions and Regulations are available from us on request.

(7) We cannot accept any liability for any damage, loss, expense or other sum(s) of any description (a) which on the basis of the information given to us by you concerning your booking prior to our accepting it, we could not have foreseen you would suffer or incur if we breached our contract with you or (b) which did not result from any breach of contract or other fault by ourselves or our employees or, where we are responsible for them, our suppliers. Additionally we cannot accept liability for any losses or expenses which relate to any business (including self-employed loss of earnings).

14. YOUR RESPONSIBILITIES

(1) It is your responsibility to arrive at the correct departure point in good time before departure and any loss, damage or expense which you suffer through failure to do so lies with you. We cannot accept any liability if you miss your flight or any other form of transport.

(2) At all times, you must behave in a reasonable and responsible manner towards any other person you meet in the course of your travel arrangements. Full payment for any such damage or loss (reasonably estimated if not precisely known) must be made direct to the accommodation owner or manager or other supplier or to us as soon as possible. If the actual cost of the loss or damage exceeds the amount paid where estimated, you must pay the difference once known. If the actual cost is less than the amount paid, the difference will be refunded. You will also be responsible for meeting any claims subsequently made against us and all costs incurred by us (including our own and the other party's full legal costs) as a result of your actions. You should ensure you have appropriate travel insurance to protect you if this situation arises. If in our reasonable opinion or in the reasonable opinion of any other person in authority, you behave in such a way as to cause or be likely to cause danger, upset or distress to any third party or damage to property, we are entitled, without prior notice, to terminate the arrangements of the person(s) concerned. We will have no further responsibility toward such person(s) including any return travel arrangements. No refunds will be made and we will not pay any expenses or costs incurred as a result of the termination.

(3) You must take all sensible precautions to protect your own safety and well-being while you are on holiday. Please ensure you are familiar with the layout of your hotel or other accommodation and in particular the location of fire exits,

escape routes and alarms as soon as possible after arrival. Children of all ages should be appropriately supervised at all times given local safety standards may be very different to those found in the UK, particularly in the vicinity of swimming pools and balconies which present inherent risks. Balconies may not be enclosed in a way which would prevent a child or adult falling from them. Swimming pools may not have regular or reliable depth markings and may contain unexpected and unmarked changes of depth. Swimming pool surrounds may be slippery when wet. You must personally familiarise yourself with the depth of the pool and any hazards it contains. The pool should be checked before every use and any apparent defects immediately reported. You must not enter any pool after drinking any alcohol, even a moderate amount, or when it is closed and must not dive into it except into any area which is specifically designated as suitable for diving and then only after you have personally checked the depth.

(4) Any passports, visas, health certificates, international driving licences and other immigration requirements and travel documents required for the holiday must be obtained by the client, whose responsibility it remains to ensure that these are all in order and to meet any additional costs incurred (whether by the client or by the Company on the client's behalf) as a result of failure to comply with such requirements.

15. CONDITIONS OF CARRIAGE

The contractual terms of the companies that provide the transportation for your travel arrangements will apply to this contract. These may contain terms which affect your rights to compensation. You can request copies of the relevant conditions of carriage from our offices. This brochure is our responsibility, as your travel company. It is not issued on behalf of and does not commit the airlines mentioned herein or any airline whose services are used in the course of your travel arrangements. Scheduled airlines' prices are based on fares current at the time of print. All airlines are subject to operational delays, change of aircraft and routing, over which we have no control. In the unlikely event that this does happen, arrangements for meals, overnight accommodation, etc. should be met by your airline. Conditions of carriage are available on request.

NB: In accordance with Air Navigation Orders, in order to qualify for infant status, a child must be under 2 years of age on the date of his/her return flight.

16. BROCHURE DESCRIPTION, FREE OFFERS AND SINGLE SUPPLEMENTS

All information concerning the hotels, villas and resorts used by the Company is continually checked to ensure that it is correct at the time of advertising. Every effort has been made to ensure the accuracy of descriptions and information. However, we are not always able to control all the components of the holiday arrangements and it is possible that an advertised facility may be withdrawn or changed, due to weather conditions, lack of demand or for maintenance, renovation etc. If you are a single traveller, or your party consists of a number less than the accommodation sleeps, a supplement will be levied. This is because our contract is based on a price per room/villa/chalet, whilst our holidays are sold on a per person basis, including flights and other elements. Some hotels do offer rooms that only sleep one person and, in this instance, there will normally be a supplement. Pictures of rooms shown in the brochure may not illustrate the room booked or that available with lead-in prices.

17. EXCURSIONS AND ACTIVITIES

We may provide you with information (before departure and/or when you are on holiday) about activities and excursions which are available in the area you are visiting. We have no involvement in any such activities or excursions which are neither run, supervised nor controlled in any way by us. They are provided by local operators or other third parties who are entirely independent of us. They do not form any part of your contract with us even where we suggest particular operators/other third parties and/or assist you in booking such activities or excursions in any way. We cannot accept any liability on any basis in relation to such activities or excursions and the acceptance of liability contained in clause 13(1) of our booking conditions will not apply to them. Where we or your accommodation supplier/manager make or take any booking

for or from you in respect of any activity or excursion available outside your accommodation, we or the accommodation manager/supplier, as applicable, do so solely as booking agent. This is the case regardless of whether the activity or excursion is advertised or mentioned in our brochure, in resort, on our website or elsewhere. Your contract for any such activity or excursion will be with the supplier or operator of that activity or excursion. We have no liability for any such activity or excursion or for any act(s) or omission(s) of the supplier or operator or for any of its/their employees or agents or any other person(s) connected with the activity or excursion. If we or the accommodation manager/supplier are found liable in any respect for any such activity or excursion (for example in our capacity as booking agent), that liability is limited to the cost of the particular activity or excursion concerned.

Where your accommodation supplier/manager (e.g. your hotel) makes or takes a booking for or from you in respect of an activity, facility or service provided by the accommodation supplier/manager but which is not advertised in our brochure or on our website and we have not taken any payment from you for this activity, facility or service, your contract for that activity, facility or service is directly with the hotel and not us. We have no liability for any such activity, facility or service or for any act(s) or omission(s) of the accommodation supplier/manager or for any of its/their employees or agents or any other person(s) connected with the activity service or facility. If however we are found liable in any respect for any such activity or excursion that liability is limited to the price you paid for the particular activity, facility or excursion concerned.

Nothing in this clause 17 shall be construed as an attempt by us to exclude liability for the negligence of ourselves or our employees resulting in your death or personal injury.

18. COMPLAINTS

Should you have a problem or any cause for complaint during your holiday, you must immediately inform the relevant supplier (e.g. your hotelier, chalet management company, airline) and our resort representative (where applicable) who will endeavour to rectify the problem while you are on holiday. If your problem or complaint remains unresolved, please telephone us on 01244 567 000 reversing the costs of the call, or call the emergency contact numbers as detailed in your itinerary. In the unlikely event that matters cannot be resolved to your satisfaction in the resort, please follow this up within 28 days of your return by writing to our Client Services Department at Eden Luxury Travel, No.1 Heritage Court, Lower Bridge Street, Chester, Cheshire, CH1 1RD, giving your booking reference/details of your booking and all other relevant information. It is strongly recommended that you communicate any problem or complaint to the supplier of the services in question as well as to our representative (where applicable) without delay and complete a report form whilst in resort. If you fail to follow this simple procedure we will have been deprived of the opportunity to investigate and rectify your problem or complaint whilst you were in resort and this may affect your rights under your contract with us.

19. DATA PROTECTION

We will only process the personal data we collect from you as permitted by the Data Protection Act 1998 and in accordance with our Data Protection Privacy Policy which appears on our website at www.edenluxurytravel.co.uk.

20. BROCHURE/PRICE VALIDITY

This brochure is valid for the period January 2020 to December 2021. The prices shown are for guidance purposes only, were correct at the time of publication but will change during the lifetime of this brochure. The up-to-date, applicable price for your chosen arrangements will be provided on enquiry or at the time of booking. E&OE, published March 2020.



SIT BACK & RELAX



...THE EDEN TRAVEL APP IS HERE!

Keep all your travel documents in one place with our incredibly handy (and free!) Travel App, now available on Android and iOS devices. Just download the App, login with the personal reference number provided by us when you made your booking and enjoy a fully personalised App experience that gives you everything you need to know about your next adventure. Access your holiday itinerary, flight updates, important information, useful tips, easy to view maps – even the local weather forecast – all in one place, without incurring any of those pesky data-roaming charges.

Plus you can easily share your holiday photos with your travel companions! Simple!

Order a Brochure

Africa

Asia, Australia & New Zealand

Canada & USA

Caribbean & Mexico

Central & South America

Europe & North Africa

Indian Ocean & Arabia

Ski & Snow

01244 567 000

www.edenluxurytravel.co.uk

EDEN Luxury Travel

1 Heritage Court

Lower Bridge Street

Chester

CH1 1RD

